

LVMTA Theory Exam LEVEL 1

1997

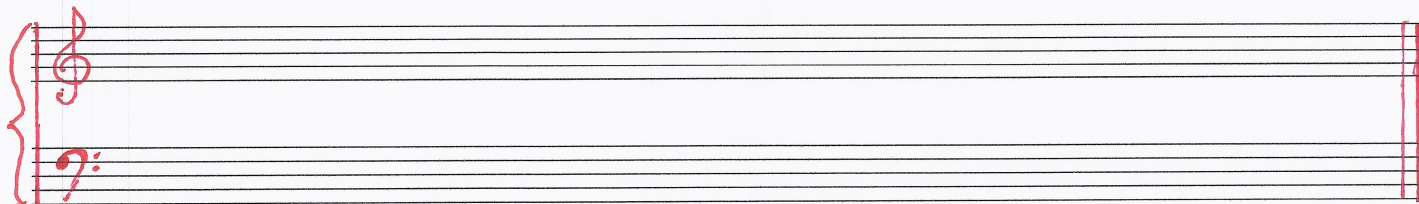
Student _____

Teacher _____

Score (100 pts) _____

NOTATION

1. On the staff below, draw a GRAND STAFF, using a BRACE, BARLINE, TREBLE CLEF SIGN, BASS CLEF SIGN, and DOUBLE BARLINE. (5pts)



2. Write the LETTER NAMES of these notes. (20 pts)

EX. D F E A E B C D G C C

EX. G D C A B E G B F C A

3. Do these notes SKIP or STEP? (4 pts)

EX. STEP SKIP STEP STEP SKIP

Intervals

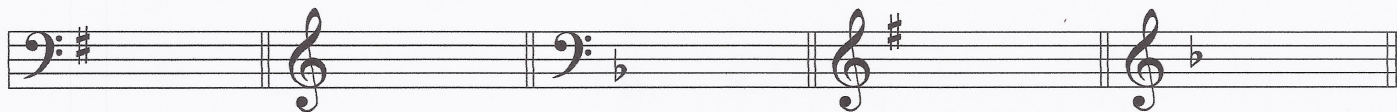
4. Name these MELODIC and HARMONIC intervals. (6 pts)

EX. 3rd 4th 2nd 5th EX 4th 5th 3rd 2nd

Level 1 p. 2

Key Signatures

1. Name these KEY SIGNATURES (4 pts)

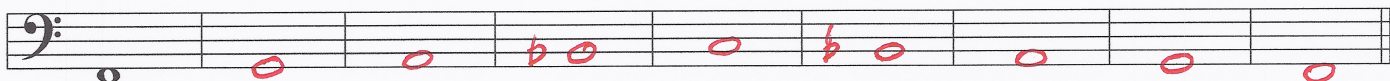


A musical staff with four measures, each containing a different key signature: G Major (one sharp), C Major (no sharps or flats), F Major (one flat), and F Minor (two flats).

EX: G Major C F G F

SCALES and CHORDS

1. Write the F PENTA SCALE UP and DOWN using WHOLE notes. Include accidentals. Write ONE note in each measure. The first note is given. (8 pts)



A musical staff in bass clef with a key signature of one flat (F). The first note is F. The notes are: F, A, C, D, F (up), F, D, C, A, F (down).

2. Write the letters to complete the MAJOR TRIADS. (4 pts)

EX: C E G F A C G B D

3. Name the following triads. (4 pts)



A musical staff with five measures, each containing a triad: C Major (C-E-G), G Major (G-B-D), G Major (G-B-D), F Major (F-A-C), and C Major (C-E-G).

EX: C G G F C

RHYTHM

1. Draw in the MISSING BARLINES. (9 pts)

EX: $\frac{3}{4}$ |  |  |  ||

$\frac{4}{4}$ |  |  |  ||

$\frac{2}{4}$ |  |  |  ||

$\frac{3}{4}$ |  |  |  ||

Level 1 p. 3

RHYTHM (cont.)

2. Explain the following TIME SIGNATURES. (4 pts)


EX: 2 = $\frac{2}{4}$ beats in every measure
4 = $\frac{4}{4}$ note gets 1 beat


3 = $\frac{3}{4}$ beats in every measure
4 = $\frac{4}{4}$ note gets 1 beat

4 = $\frac{4}{4}$ beats in every measure
4 = $\frac{4}{4}$ note gets 1 beat

3. Draw the following NOTES and RESTS (5 pts)

EX: 1. Whole note 

4. Quarter rest 

2. Quarter note 

5. Half rest 

3. Dotted half note 

6. Whole rest 

EAR TRAINING

1. You will hear two notes. Which is higher: number 1 or number 2? Write 1 or 2. (3 pts)

EX: 2 a. 2 b. 1 c. 2

2. Listen to the melodies and write U if the melody goes up, D if the melody goes down, and S if the melody stays the same. (4 pts)

EX: D a. U b. S c. U d. D

3. The sounds you hear will be loud or soft. Circle *p* for soft or *f* for loud. (3 pts)

EX:

<i>f</i>	<i>p</i>
----------	----------

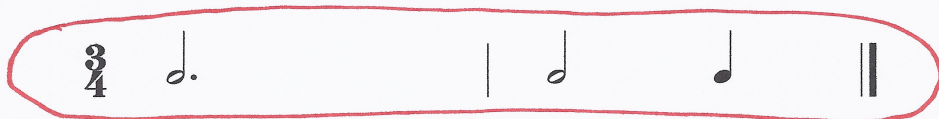
<i>f</i>	<i>p</i>
----------	----------

<i>f</i>	<i>p</i>
----------	----------

<i>f</i>	<i>p</i>
----------	----------

EAR TRAINING (cont.)

4. Circle the rhythm pattern you hear. (1 pt)



VOCABULARY

1. Write the LETTER of the definition beside its musical term. (9 pts)

EX: h Crescendo

d Legato

b Tempo

f Staccato

j D. C. al Fine

g Tie

i Andante

e Moderato

c Allegro

a Diminuendo

a. Gradually softer

b. Speed of a piece

c. Fast, happy

d. Smoothly connected

e. Moderate tempo

f. Short and detached

g. Connect notes of the same pitch

h. Gradually louder

i. Walking tempo

j. From the beginning to the end

2. Draw the SIGN that stands for the word or words. (7 pts)

EX: f forte

mp mezzo piano

b flat

:|| repeat

sharp

mf mezzo forte

⌒ fermata

p piano

Level 1 Ear Training

Examiner's Guide

1997

PITCH

Say: You will hear two notes. Which is higher, number 1 or number 2? Write 1 or 2.

(Play each group of notes 2 times, pausing inbetween. Always explain the example first.)



EX: 2

a. 1

b. 1

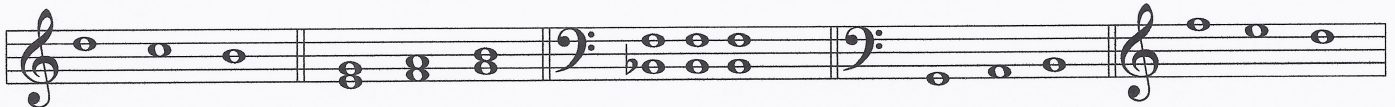
c. 2

DIRECTION

Say: Listen to the melodies. Write U if the melody goes up, D if the melody goes down,

S if the melody stays the same.

(Play each group of notes 2 times, pausing in between. Always explain the example first.)



EX: D

a. U

b. S

c. U

d. D

LOUD / SOFT

Say: The sounds you hear will be LOUD or SOFT. Circle *p* for soft or *f* for loud.

(Play each group of notes 2 times, pausing inbetween. Always explain the example first.)



EX: (*f*) *p*

(*p*)

(*f*)

(*p*)

(Play this loud)

RHYTHM

Say: There are 3 rhythm patterns on your paper. Circle the one you hear.

(Play the rhythm 2 times, pausing inbetween.)

