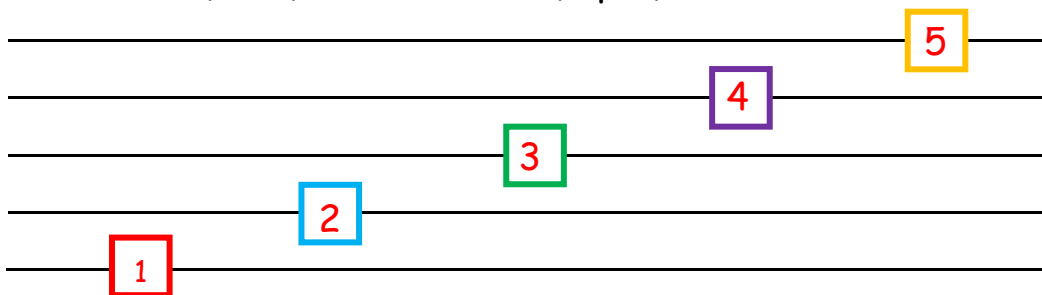


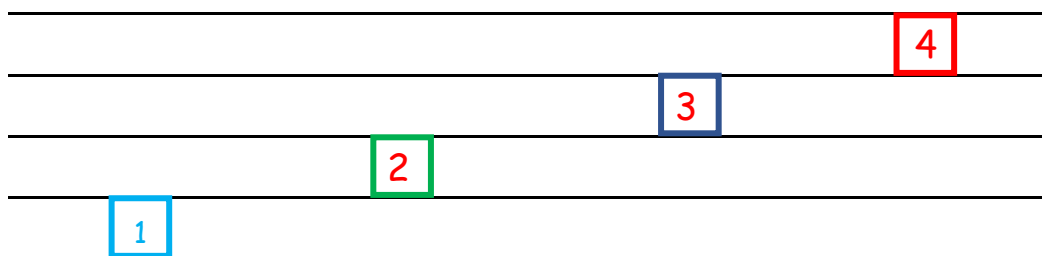
1. Write the musical alphabet. (5 pts)

A   B   C   D   E   F   G

2. Number the lines (1 - 5) on the staff. (4 pts)



3. Number the spaces (1 - 4) on the staff. (3 pts)



4. Draw these music notes. (4 pts)

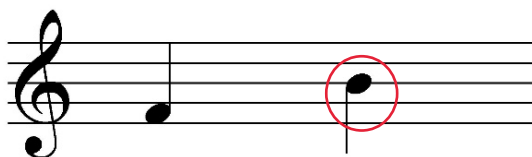
Quarter Note

Dotted Half Note

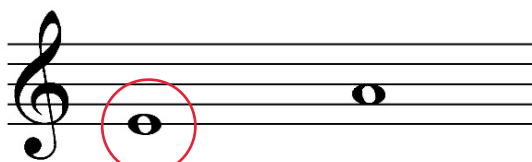
Half Note

Whole Note

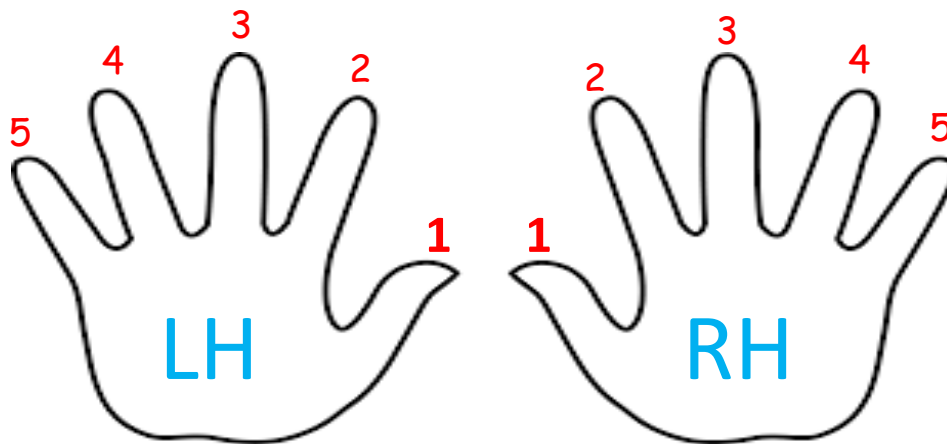
5. Circle the note that is higher. (2 pts)



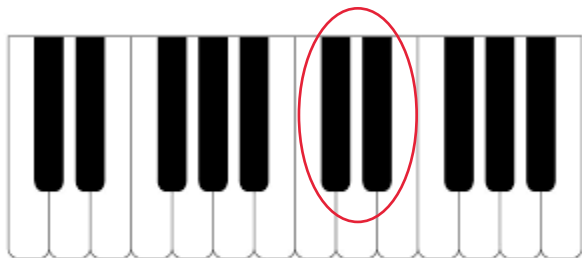
6. Circle the note that is lower. (2 pts)



7. Name the number on the finger of each hand. (8 pts)



8. Draw a circle around a group of two black notes. (1 pt)



9. Draw a circle around a group of three black notes. (1 pt)



10. Which note is longer? (1 pt)



OR



11. Which note is shorter? (1 pt)



OR

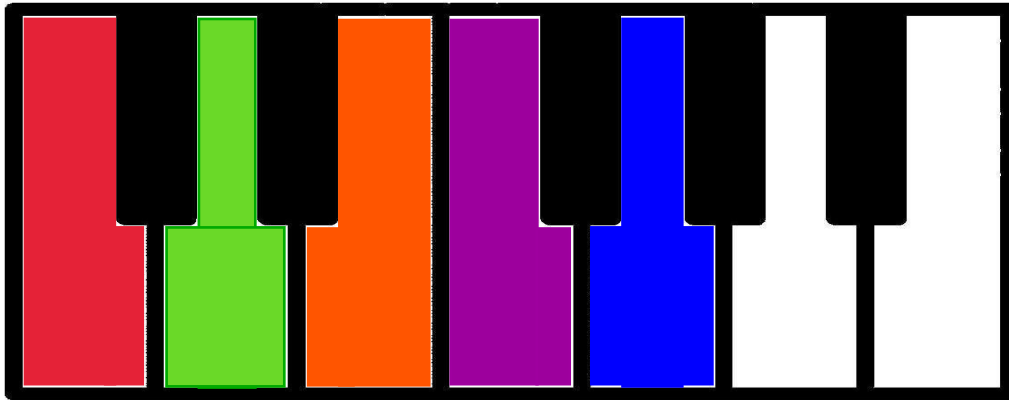


12. How many quarter notes do you see? (1 pt) 4

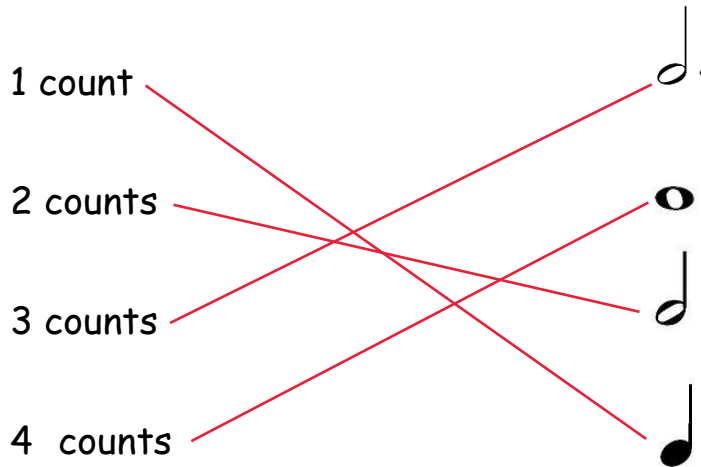


13. Fill in your keyboard with these colors. (5 pts)

- Color C **red**
- Color D **green**
- Color E **orange**
- Color F **purple**
- Color G **blue**



14. Draw a line from the note to the number of counts it gets. (4 pts)



15. Which clef is for HIGHER notes? (1 pt)



16. Which clef is for LOWER notes? (1 pt)



# EAR TRAINING



1. For each example, how many notes do you hear? (2 pts)

A. 4 OR 5

B. 6 OR 7

2. For each example, which note is played LONGER? Circle 1 or 2.  
(2 pts)

A. 1 OR 2

B. 1 OR 2

