

# LVMTA Theory Exam LEVEL 1

1997

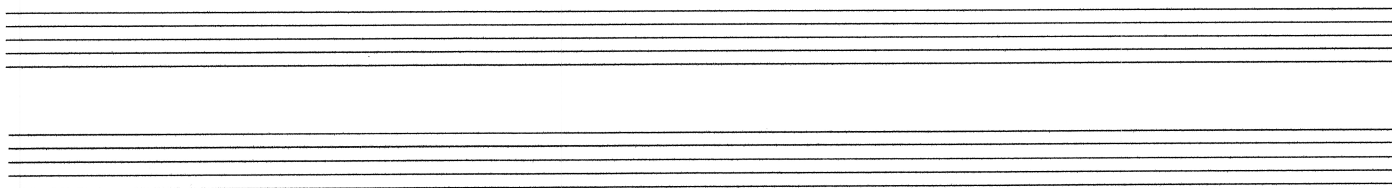
Student \_\_\_\_\_

Teacher \_\_\_\_\_

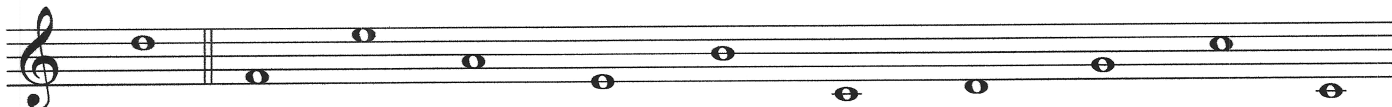
Score (100 pts) \_\_\_\_\_

## NOTATION

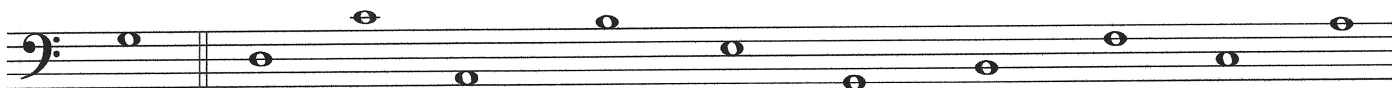
1. On the staff below, draw a GRAND STAFF, using a BRACE, BARLINE, TREBLE CLEF SIGN, BASS CLEF SIGN, and DOUBLE BARLINE. (5 pts)



2. Write the LETTER NAMES of these notes. (20 pts)

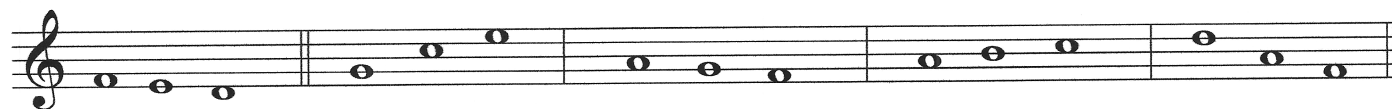


EX: D \_\_\_\_\_



EX: G \_\_\_\_\_

3. Do these notes SKIP or STEP? (4 pts)



EX: STEP \_\_\_\_\_

## Intervals

4. Name these MELODIC and HARMONIC intervals. (6 pts)

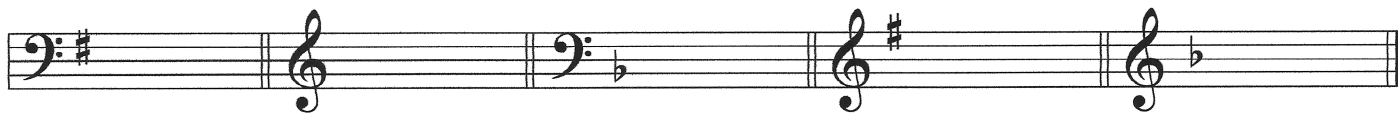


EX: 3rd \_\_\_\_\_ EX: 4th \_\_\_\_\_

**Level 1 p. 2**

**Key Signatures**

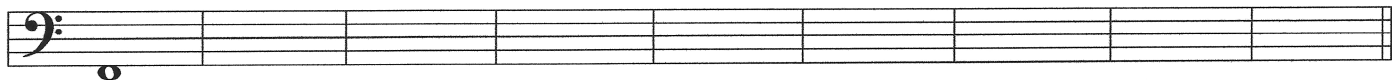
1. Name these KEY SIGNATURES (4 pts)



EX: G Major \_\_\_\_\_

**SCALES and CHORDS**

1. Write the F PENTA SCALE UP and DOWN using WHOLE notes. Include accidentals. Write ONE note in each measure. The first note is given. (8 pts)



2. Write the letters to complete the MAJOR TRIADS. (4 pts)

EX: C    E    G                    F                    G                   

3. Name the following triads. (4 pts)



EX: C \_\_\_\_\_

**RHYTHM**


1. Draw in the MISSING BARLINES. (9 pts)



**Level 1 p. 3**

**RHYTHM (cont.)**

2. Explain the following TIME SIGNATURES. (4 pts)

EX: 2 =  $\frac{2}{4}$  beats in every measure  
4 =  note gets 1 beat

3 = \_\_\_\_\_ beats in every measure  
4 = \_\_\_\_\_ note gets 1 beat

4 = \_\_\_\_\_ beats in every measure  
4 = \_\_\_\_\_ note gets 1 beat

3. Draw the following NOTES and RESTS (5 pts)

EX: 1. Whole note  \_\_\_\_\_

4. Quarter rest \_\_\_\_\_

2. Quarter note \_\_\_\_\_

5. Half rest \_\_\_\_\_

3. Dotted half note \_\_\_\_\_

6. Whole rest \_\_\_\_\_

**EAR TRAINING**

1. You will hear two notes. Which is higher: number 1 or number 2? Write 1 or 2. (3 pts)

EX: 2 a. \_\_\_\_\_ b. \_\_\_\_\_ c. \_\_\_\_\_

2. Listen to the melodies and write U if the melody goes up, D if the melody goes down, and S if the melody stays the same. (4 pts)

EX: D a. \_\_\_\_\_ b. \_\_\_\_\_ c. \_\_\_\_\_ d. \_\_\_\_\_

3. The sounds you hear will be loud or soft. Circle *p* for soft or *f* for loud. (3 pts)

EX: 

<i>f</i>	<i>p</i>
----------	----------

<i>f</i>	<i>p</i>
----------	----------

<i>f</i>	<i>p</i>
----------	----------

<i>f</i>	<i>p</i>
----------	----------

EAR TRAINING (cont.)

4. Circle the rhythm pattern you hear. ( 1 pt)



VOCABULARY

1. Write the LETTER of the definition beside its musical term. (9 pts)

EX:   h   Crescendo

           Legato

           Tempo

           Staccato

           D. C. al Fine

           Tie

           Andante

           Moderato

           Allegro

           Diminuendo

a. Gradually softer

b. Speed of a piece

c. Fast, happy

d. Smoothly connected

e. Moderate tempo

f. Short and detached

g. Connect notes of the same pitch

h. Gradually louder

i. Walking tempo

j. From the beginning to the end

2. Draw the SIGN that stands for the word or words. (7 pts)

EX:   *f*   forte

           mezzo piano

           flat

           repeat

           sharp

           mezzo forte

           fermata

           piano

# Level 1 Ear Training

## Examiner's Guide

1997

### PITCH

Say: You will hear two notes. Which is higher, number 1 or number 2? Write 1 or 2.

(Play each group of notes 2 times, pausing inbetween. Always explain the example first.)



EX: 2

a. 1

b. 1

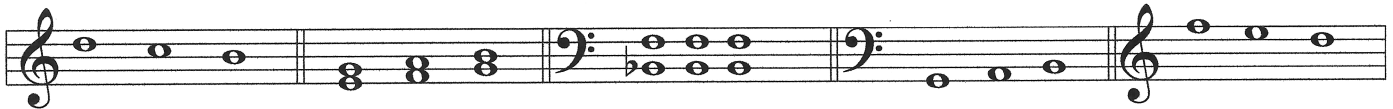
c. 2

### DIRECTION

Say: Listen to the melodies. Write U if the melody goes up, D if the melody goes down,

S if the melody stays the same.

(Play each group of notes 2 times, pausing in between. Always explain the example first.)



EX: D

a. U

b. S

c. U

d. D

### LOUD / SOFT

Say: The sounds you hear will be LOUD or SOFT. Circle *p* for soft or *f* for loud.

(Play each group of notes 2 times, pausing inbetween. Always explain the example first.)



EX: (f) *p*

(p)

(f)

(p)

(Play this loud)

### RHYTHM

Say: There are 3 rhythm patterns on your paper. Circle the one you hear.

(Play the rhythm 2 times, pausing inbetween.)

