

NOTATION

1. Name the following NOTES. (16 pts)

EX: G C

EX: C F

2. Draw the following NOTES and RESTS. (8 pts)

EX: One quarter note		EX: Half rest	
a. Two sixteenth notes	_____	e. Whole rest	_____
b. Eighth note triplets	_____	f. Sixteenth rest	_____
c. Dotted quarter note	_____	g. Quarter rest	_____
d. Half note	_____	h. Eighth rest	_____

Intervals

1. Name the following INTERVALS. (6 pts)

EX: P 5th

2. Draw the HARMONIC INTERVAL above the given notes. (3 pts)

EX: Perf 8th Perf 5th Maj 3rd Maj 2nd

3. Draw the MELODIC INTERVAL. (3 pts)

EX: Maj 2nd Perf Prime Perf 4th Maj 6th

KEY SIGNATURES

1. Name the MINOR keys. (2 pts.)

EX: A minor

2. Draw the KEY SIGNATURES for these keys. (2 pts)

EX: G Major

D Major

A Major

SCALES and CHORDS

1. On the staff below, draw the MINOR Triad in root position. (2 pts)

EX: A minor

D minor

E minor

2. Circle the FORM of each E MINOR scale below. (3 pts)

natural harmonic melodic

natural harmonic melodic

natural harmonic melodic

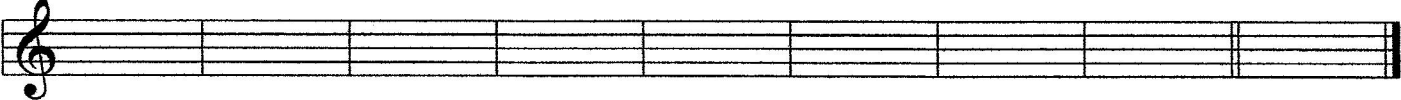
3. Write the correct ROMAN NUMERAL and LETTER NAME for each chord below. (4 pts)

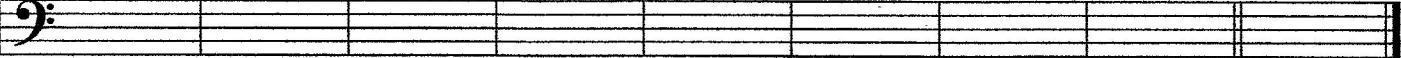
EX: I

D

SCALES and CHORDS (cont.)

4. Draw the MAJOR SCALES and their TONIC (I) TRIADS. Use whole notes, one note per measure. Draw necessary accidentals BEFORE the notes. (18 pts)


 D Major Tonic triad


 A Major Tonic triad

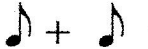
RHYTHM

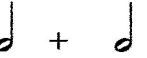
1. Choosing from 2/4, 3/4, 4/4, 6/8, 3/8, or 2/2, write the time signature for the rhythm patterns below. (3 pts)



 EX:

2. Count the beats in each measure. (4 pts)


 EX: 1 2 3 4

3. Music Math: Add the notes and rests. EX:  (rest) (4 pts)

a.  = _____ note

c.  = _____ rest

b.  = _____ rest

d.  = _____ note

EAR TRAINING

1. You will hear scales, triads, and intervals as listed below. Number them in the order you hear them. (7 pts)

Scales _____ Major _____ Harmonic minor

Triads _____ Major _____ Minor

Intervals _____ 2nd _____ 5th _____ 8th (octave)

EAR TRAINING (cont.)

2. Is the rhythm pattern you hear the **Same** or **Different** from the one you see on your paper. Write **S** for the same or **D** for different. (2 pts)

EX: S

Notation Correction

You will hear some notes and rhythm that are different from those on your paper. Circle the incorrect note(s) or rhythm. Mark the notes with "N" and rhythm with "R". (4 pts)

VOCABULARY HISTORY FORM

Match the MUSICAL TERM with the definition. (9 pts)

Music Symbols

EX: f. Dolce

a. As or like

Draw these music symbols. (4 pts)

_____ Baroque

b. 1900 - present

1. Cut time _____

_____ Arco

c. Lively

2. Crescendo _____

_____ Simile

d. 1600-1750

3. Accent _____

_____ Vivace

e. Use the bow

4. Common time _____

_____ Contemporary

f. Pluck the violin string

_____ Allegretto

g. Sweetly

_____ Binary form

h. 1825-1900

_____ Romantic

i. A little slower than Allegro

_____ Pizzicato

j. A B or 2- part form

Level 3 Ear Training

Examiner's Guide

1997

Scales

Say: You will hear the two scales listed on your paper. Number them (1, 2) in the order you hear them..

(Play each scale 2 times, pausing inbetween.)



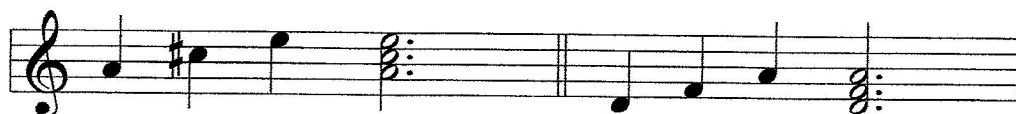
1. A harmonic minor

2. E Major

Triads

Say: You will hear a major or a minor triad. Number them (1, 2) in the order you hear them.

(Play each chord broken and blocked 2 times, pausing inbetween.)



1. A Major

2. D minor

Intervals

Say: You will hear the intervals listed on your paper (2nd, 5th, 8th (oct)). Number them 1, 2, 3 in the order you hear them. (Play each interval 2 times, pausing inbetween.)



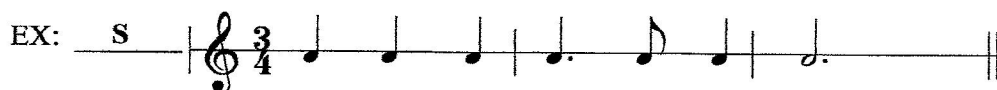
1. 5th

2. 8th (oct)

3. 2nd

Rhythm

(Play the following example and explain if the rhythm is the same or different from the example.)



Say: Is the rhythm pattern you hear the **Same** or **Different** from the one on your paper.

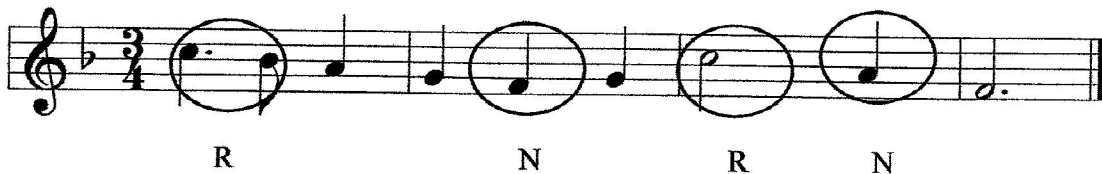
Write **S** for the same or **D** for different.



Level 3 Ear Training Guide p. 2

Notation Correction

Say: You will hear a melody with some notes and rhythm DIFFERENT from what you see on your paper.
Circle those notes or rhythm. Mark the notes with N and the rhythm with R.
(Play the melody 3 times, pausing inbetween.)



A musical staff in 3/4 time with a key signature of one flat (Bb). The melody consists of the following notes: a quarter note Bb, a quarter note A, a quarter note G, a quarter note F, a quarter note E, a quarter note D, a quarter note C, and a quarter note Bb. The first measure (Bb, A, G) is circled and labeled 'R' below it. The second measure (F, E) is circled and labeled 'N' below it. The third measure (D, C) is circled and labeled 'R' below it. The fourth measure (Bb) is circled and labeled 'N' below it.