

**NOTATION: Intervals**

1. Name the QUALITY and SIZE of the following intervals. (5 pts)

EX: dim 5th \_\_\_\_\_

2. Draw the INTERVALS ABOVE the given note. (6 pts)

EX: Aug 4th      Maj 3rd      min 6th      Perf 8th      Perf 4th      dim 7th      min 2nd

**Key Signatures**

1. Identify the KEY. (3 pts)

EX: E Maj \_\_\_\_\_

2. Draw the KEY SIGNATURE for these keys. (4 pts)

EX: d minor      f minor      b minor      c minor      g minor

**SCALES and CHORDS**

1. Identify the TRIADS with a letter name. (4 pts)

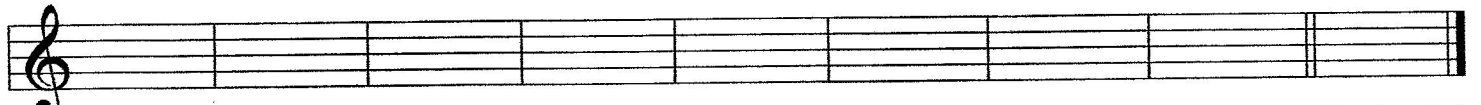
EX: E Maj \_\_\_\_\_


2. Draw the MINOR SCALES using whole notes, one note per measure. In the last measure draw the TONIC TRIAD. Place necessary accidentals BEFORE the notes.

c natural minor (6 pts)

Tonic triad

SCALES and CHORDS (cont.)



 **b harmonic minor (6 pts)** Tonic triad

 **g melodic minor (ascending and descending) (12 pts)** Tonic triad

RHYTHM

1. Write the correct TIME SIGNATURE in the box. Choose from 3/8 5/8 6/8 9/8 12/8. (2 pts)



2. Draw NOTES and/or RESTS to complete the measures. Choose only   and rests. (3 pts)



EX:

EAR TRAINING

1. You will hear the SCALES, CHORDS, and INTERVALS listed below. Number them (1, 2, 3, etc.) in the order you hear them. (17 pts)

- Scales**      \_\_\_\_\_ Major      \_\_\_\_\_ Natural minor      \_\_\_\_\_ Harmonic minor  
                   \_\_\_\_\_ Melodic minor      \_\_\_\_\_ Chromatic
- Chords**      \_\_\_\_\_ Major      \_\_\_\_\_ Minor      \_\_\_\_\_ Diminished      \_\_\_\_\_ Augmented
- 7th Chords**      \_\_\_\_\_ Maj 7th      \_\_\_\_\_ Dom 7th
- Intervals**      \_\_\_\_\_ Maj 2nd      \_\_\_\_\_ min 2nd      \_\_\_\_\_ Maj 3rd      \_\_\_\_\_ min 3rd  
                   \_\_\_\_\_ Perf 4th      \_\_\_\_\_ Perf 5th      \_\_\_\_\_ Perf 8th (oct)

Level 6 p. 3

EAR TRAINING (cont.)

2. Name the KEY of this musical example. Some NOTES and/or RHYTHM will be different from what you hear played. CIRCLE the differences, then label them with "N" for NOTES and "R" for RHYTHM. (3 pts)

Key of \_\_\_\_\_

3. Complete the measures with the correct NOTES and RHYTHM. The example will be played 3 times. (4 pts)

VOCABULARY

Write the LETTER of the definition beside each word. There are more definitions than needed. (10 pts)

- |                  |                                    |
|------------------|------------------------------------|
| _____ Morendo    | a. Second degree of scale          |
| _____ Tenuto     | b. Muffle, to dampen harp strings  |
| _____ Mediant    | c. Heavily                         |
| _____ Assai      | d. Fifth degree of scale           |
| _____ Dominant   | e. Held                            |
| _____ Opus       | f. Third degree of scale           |
| _____ Intonation | g. Work                            |
| _____ Supertonic | h. Fourth degree of scale          |
| _____ Etouffee   | i. Much, very                      |
| _____ Pesante    | j. True or false matching of pitch |
|                  | k. Suddenly                        |
|                  | l. Dying away                      |

## HISTORY

Fill in the blank with the nationality and musical period of the composer. (10 pts)

1. Even though he spent much of his life in Spain, Domenico Scarlatti was born in \_\_\_\_\_  
and his keyboard music was composed during the \_\_\_\_\_ period.
2. A court musician for Prince Esterhazy, Franz Joseph Haydn, native of \_\_\_\_\_  
composed many piano sonatas and symphonies in the \_\_\_\_\_ period.
3. Franz Schubert, from \_\_\_\_\_, a great composer of songs and  
symphonies, wrote piano works during the \_\_\_\_\_ period.
4. Edward MacDowell was one of the first important composers in \_\_\_\_\_ (country)  
and bridged two periods - the \_\_\_\_\_ and \_\_\_\_\_.
5. A native of \_\_\_\_\_, Felix Mendelssohn composed music of the  
\_\_\_\_\_ period.

## FORM

Fill in the blanks. (5 pts)

1. The sonata form has 3 parts, named \_\_\_\_\_,  
and \_\_\_\_\_.
2. The second movement of a sonata displays a different character and is titled \_\_\_\_\_.
3. The third (or final) movement of a sonata may be in \_\_\_\_\_ form, which has a scheme  
such as A B A C A , etc.

# Level 6 Ear Training

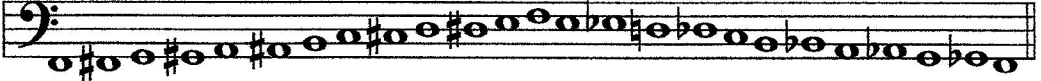
## Examiner's Guide

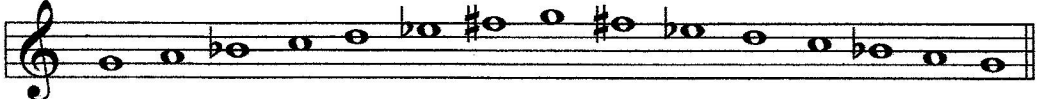
1997 Practice test

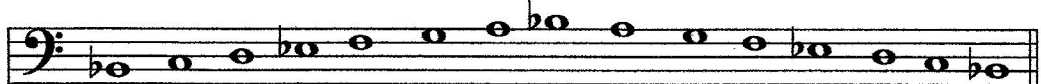
### Scales


You will hear the scales listed on your paper. Number them (1, 2, 3) in the order you hear them.

1. C Natural minor 

2. F Chromatic 

3. G Harmonic minor 

4. Bb Major 

5. E Melodic minor 

### Chords

You will hear the chords listed on your paper. They include Major, minor, diminished, Augmented. Number them in the order you hear them.



1. Ab Major

2. B diminished

3. D Augmented

4. A minor

### 7th Chords



1. Dom 7th

2. Maj 7th

**Intervals**

You will hear the intervals listed on your paper. Number them in the order you hear them.

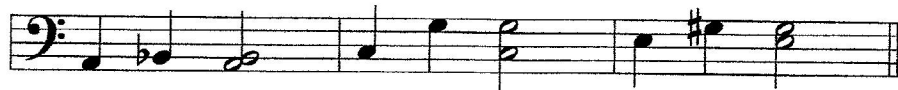


1. Perf 4th

2. Perf 8th

3. Min 3rd

4. Maj 2nd



5. Min 2nd

6. Perf 5th

7. Maj 3rd

**Notation Correction**

Circle the notes that are different from what you hear played. Write an "N" where Notes are different, write "R" where the Rhythm is different.



**Melodic / Rhythmic Dictation**

Complete the measures with the notes and rhythm you hear.

