



PAT:ZAP2002/3661

TrestleJacks

TJ470 - R22.5 - 30T

TJ515 - R24.5 - 30T



Owner's Manual

Version 1.1

May 2018

WARNING SUMMARY

This document contains general safety warnings that must be understood and applied during operation of this equipment. Failure to observe these precautions could result in serious injury or death to personnel.

EXPLANATION OF SAFETY WARNING ICONS



HEAVY OBJECT – Heavy object on human figure shows that heavy parts present a danger to life or limb.



HEAVY OBJECT – Foot with heavy object on top shows that heavy parts can crush and harm.



HEAVY OBJECT – Hand with heavy object on top shows that heavy parts can crush and harm.

WARNING

The use of damaged, corroded or otherwise defective TrestleJacks could result in stand failure, causing severe injury or death to user. Always inspect TrestleJacks prior to use.

Check the TrestleJacks for bends, separated welds, cracks, corrosion, damaged, loose, or missing parts, excessive wear or other evidence of mishandling.

Each stand shall be inspected immediately if the device is believed to have been subject to an abnormal load or shock.

VEHICLE LIFTING & SUPPORT STAND HAZARDS

Study, understand and follow all instructions before operating this device. Failure to heed these instructions may result in property damage and/or personnel injury or death:

1. Do not exceed rated capacity.
2. Use only on a hard level surface.
3. Use as a matched pair to support each end of the vehicle when lifting an entire axle.
4. No alterations shall be made or attachments added to this product.

Document referenced:

TITLE: OEM PRODUCT and USER ISSUE BASED RISK ASSESSMENT OF TRESTLEJACKS 30 Ton R22.5 / R24.5

FILENAME: TJ30TR22.5/ R24.5 – Risk Assessment.pdf

REVISION: 0

REFERENCE USED: (RA---(+Section number))

EXAMPLE: RA---1.1 ----- Refers to section 1.1 in the abovementioned document.

Product Overview

TrestleJacks 30T - TJ515 & TJ470 for R22.5 & R24.5 are specialized trailer lifting and standing devices that utilizes driving motion from the tractor for lifting and lowering heavy load trailer axles.

Once in the upright position TrestleJacks becomes an axle support stand with a carrying capacity of 30 Ton.

Application

The TrestleJacks 30T - TJ515 & TJ470 for R22.5 & R24.5 product range supports only heavy load trailers fitted with the R22.5 size or R24.5, commercial or super single tires. Both square and round axles are supported.

The following tire sizes in the R22.5 & R24.5 category are supported: *We have not been able to test every tire size but we believe that the TJ470 will fit any R22.5 and the TJ515 will fit any R24.5. This assumption is based on the distance between the road and the lower part of the axel are based on the diameter of the tire.*

- | | |
|--------------------------------------|--------------------------------------|
| <input type="checkbox"/> 11R22.5 | <input type="checkbox"/> 11R24.5 |
| <input type="checkbox"/> 12R22.5 | <input type="checkbox"/> 12R24.5 |
| <input type="checkbox"/> 245/75R22.5 | <input type="checkbox"/> 245/75R24.5 |
| <input type="checkbox"/> 255/70R22.5 | <input type="checkbox"/> 255/70R24.5 |
| <input type="checkbox"/> 295/75R22.5 | <input type="checkbox"/> 295/75R24.5 |
| <input type="checkbox"/> 425/65R22.5 | <input type="checkbox"/> 425/65R24.5 |

Incorrect Application:

TrestleJacks products are designed to work on any commercial or recreational trailer as long as it's attached to the vehicle to apply the forward or reverse motion.

The TrestleJacks are not designed to be used on conventional vehicles, pickup trucks, buses or any other vehicle on 4 or more wheels.

How to operate TrestleJacks:

Example: Lifting one side of an axle of a heavy load trailer:

1. Identify an even and hard surface for the lifting process. Always be aware of safety and your surroundings.
2. Apply parking brakes, turn off ignition, chock the wheels and apply trailer brakes before any preparation work is started.
3. Place the TrestleJacks 30T TJ470 unit in the loading position underneath the trailer axles as close to the troubled wheel as possible. Position the jack cup as close to the axel as possible with the least amount of play, this will ensure the Jacks do not slide while lifting. Ensure that the TrestleJacks cup is positioned against the axle utilizing a clear space that is free from axle mounted components. Move any wiring out of the way that could potentially be damaged during the lifting process.
4. In the event where the entire axle needs to be lifted, two TrestleJacks per axle must be used – See illustration 2.



Illustration 1: TrestleJacks in loading position.



Illustration 2: Lifting an axle or entire empty trailer

WARNING

All persons must keep clear of at least 20FT from the vehicle once the TrestleJacks are secured and before axle lifting procedure starts.

5. The driver of the vehicle must ensure that there are no persons within 20FT from the trailer axles or any person underneath the trailer.
6. Release all trailer brakes, remove wheel chocks, release park brakes and turn on ignition.
7. Reverse the tractor slowly for lifting process to start and continue to reverse until a positive stop is received from the trailer or the tractor moved approximately 16 inches.
8. Lifting is complete once the TrestleJack is in the upright position, the cup is holding the axle securely in place and the base plate is level to the ground surface.
9. Releasing the brakes will in most cases cause the TrestleJacks to settle in the correct upright standing & supporting position.
10. Apply park brakes, install chocks and switch off ignition.

IMPORTANT

Engage parking brakes, switch off ignition, apply trailer brakes, chock the wheels and lower the trailer stands to ensure no further rig movement is possible while repairs are taking place.

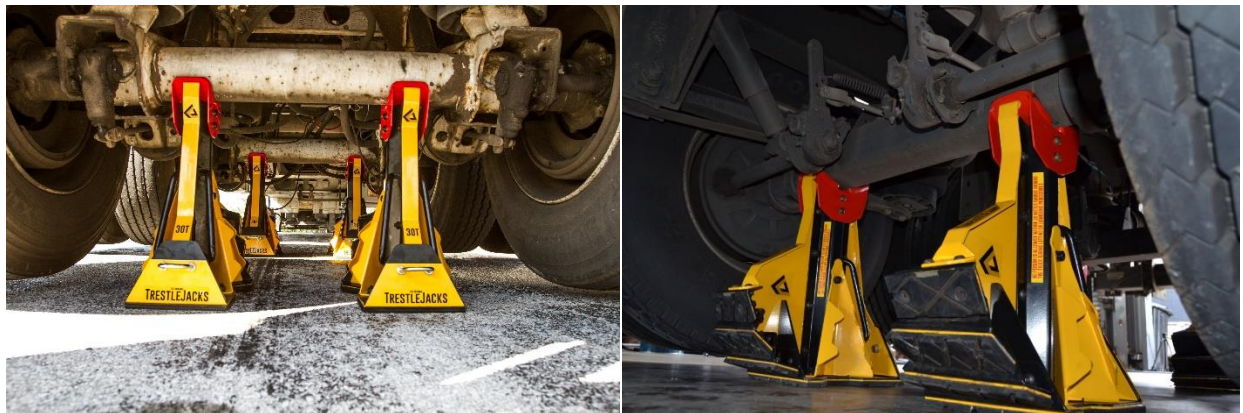


Illustration 3. TrestleJacks in the upright/stand position

Lowering process:

1. After all repairs have been done and the wheels are replaced and secured, the lowering process is ready to begin.
2. Ensure that no person is underneath or near the vehicle within a 20FT range from the trailer axles.
3. Release trailer brakes, remove wheel chocks, switch on ignition, and release park brakes.
4. Drive the vehicle forward slowly and the lowering process will begin.
5. The trailer wheels will take over the load and the TrestleJacks will be released from the axle after about 16 Inches of forward movement.
6. Immediately bring the rig to a halt once the TrestleJacks have been released from the axle or a distance of 16 Inches has been covered.
7. Apply park brakes, switch off tractor engine, chock the wheels and apply the trailer brakes before removing the TrestleJacks from underneath the trailer.

IMPORTANT

STOP IMMEDIATELY AFTER DRIVING FORWARD FOR 16 INCHES. REMOVE THE TRESTLEJACK BEFORE CONTINUING DRIVING.

CAUTION:

During the lowering process do not drive further than 400mm to ensure none of the TrestleJacks used are causing any obstruction that may result in damage to equipment.

Additional Safety Information:

During lifting and lowering procedures, no person is allowed underneath the trailer or within 20ft from the TrestleJacks, and the driver is required to be in the tractor's cab. The TrestleJacks base plate covers more ground surface area than a single tire, providing trusted stability. The axle cup holds the axle securely in place. The product design provides a safe upright stand as the axle moves over the top dead center and no other lifting support is required in normal working conditions.

Limited Warranty:

Warrants this product against defects in workmanship for one year from the date of purchase. During this warranty period, this product will be repaired or replaced, at TrestleJacksUSA discretion, without charge. Please read your instructions thoroughly and use this product only as directed. This warranty does not cover any damage due to accidental misuse, abuse or negligence. Repair or replacement as provided under this warranty is the exclusive remedy of the consumer. Seller shall not be liable for any incidental or consequential damage for breach of any expressed or implied warranty of merchantability or fitness for a particular purpose on this product is limited to the duration of the warranty.