



# Progressive Web Apps

**Mike Hartington**, GDE & Developer Advocate at Ionic  
**Roger Tipping**, VP of Client Success at BrieBug



# What is a Progressive Web App?

Progressive Web Apps are an evolution of regular web pages that combine features offered by modern browsers with the benefits of a mobile experience.

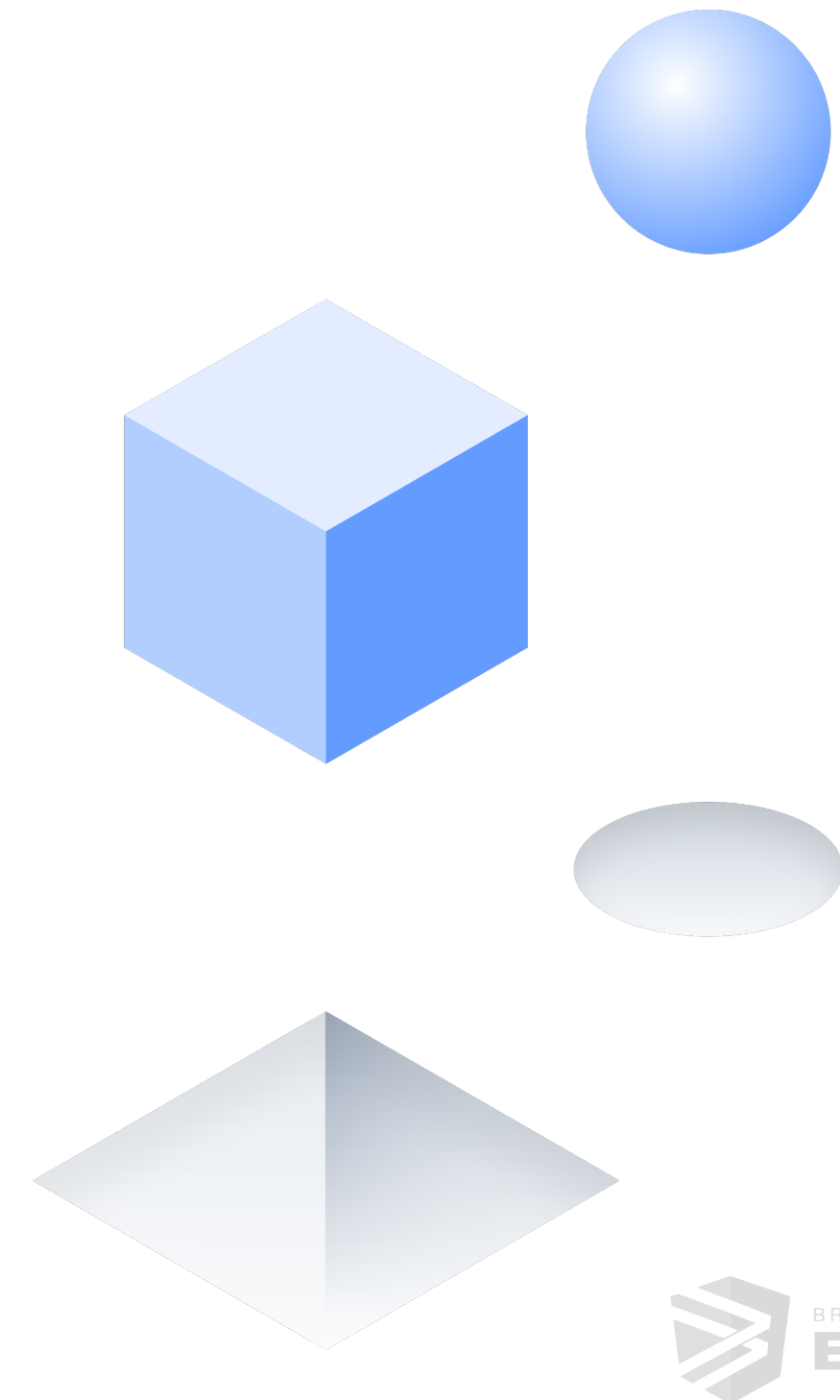
PWA Capabilities:

- **Installable** - Launch directly from the device
- **Reliable** - Performs even in slow or intermittent network connections
- **Engaging** - Feels like a native app on the device
- **Offline capabilities** - Cache content using service workers

# Developing a Progressive Web App

What to consider when building a PWA:

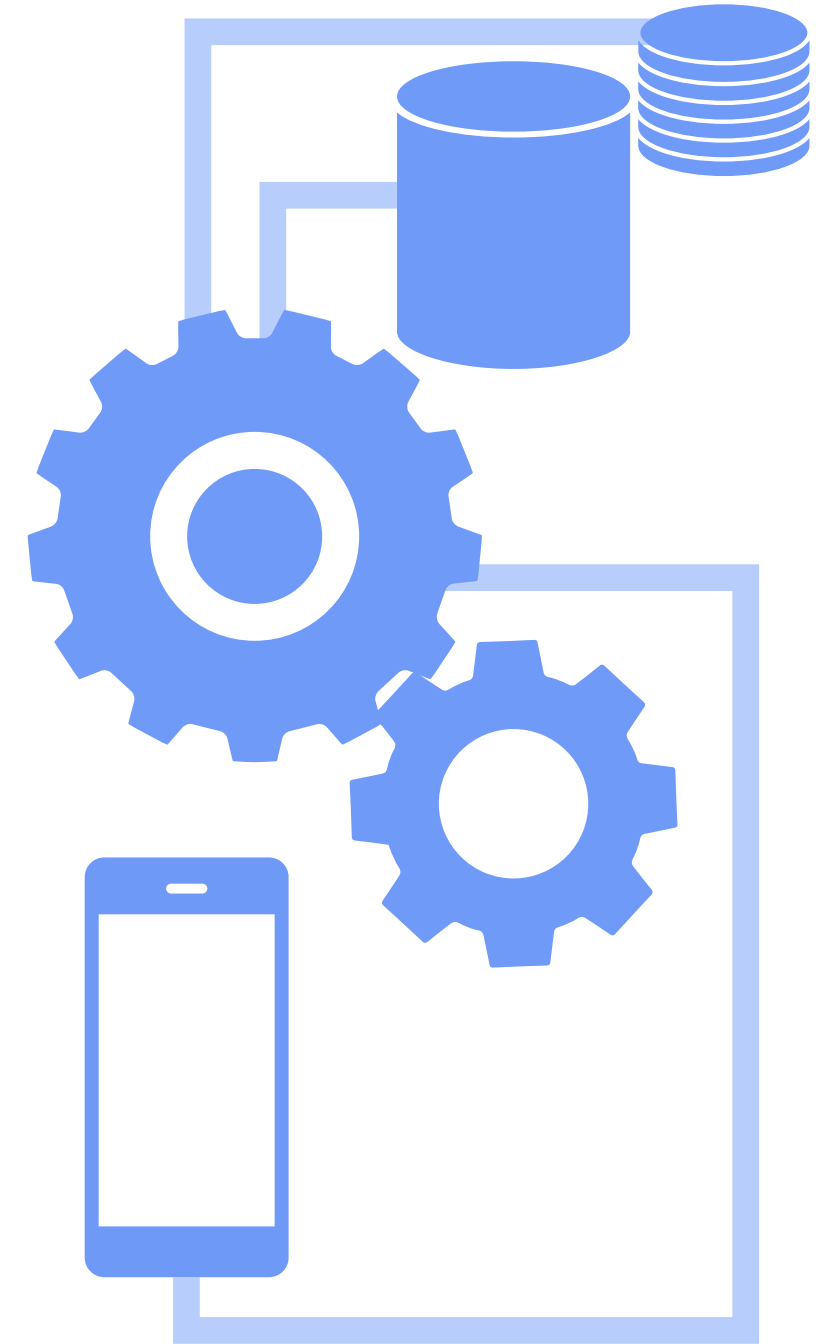
- How are you building your app?
- What kind of content are you shipping?
- What best practices are you following?



# What is a Service Worker?

Proxy for the network and client

- Intercepts all request
- Can create a cache of responses
- Notifications, Background sync, & more

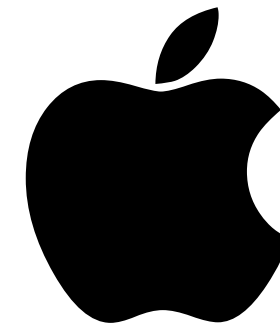


# Deploying a Progressive Web App

Deployment options:

- PWA only
- PWA + Native iOS + Native Android
- Hybrid App (PWA base, native wrapper)

PWA





# Switching to a Progressive Web App

Is this approach for me and my organization?

- Are my users going to be limited to their access to the internet?
- Do I want my apps to be installed and work offline?
- Do I want to take advantage of all the latest native device capabilities?

PWA

# TRANSLATING TECHNOBABBLE



[TRANSLATINGTECHNOBABBLE.COM](https://TRANSLATINGTECHNOBABBLE.COM)