



BRA CEWEAR™

BY WALRUS NEW ZEALAND LIMITED

Product Catalogue



Manufacturers and Distributors of Orthopaedic Devices

24D Sir William Avenue, East Tamaki 2013, Auckland, New Zealand | info@walrus.co.nz

NZ Free Phone: 0508 272 236 | Phone: +64 9 5709316

Company Overview

Goal

To provide quality New Zealand designed and manufactured orthopaedic products, which improve patient care and outcomes.

Company

A privately owned New Zealand company, operating since 1984.

Our People

Our employees and their skill base are essential to the success of the business. We have aimed at all times to create a culture of long-term trust and integrity, where each employee participates to maintain quality by taking a personal interest in and responsibility for product throughout the production process.

Environment & Society

We are committed to conduct our business at all times in a fair, ethical and professional manner. We endeavour to minimise the impact of our operations on the environment by efficient use of resources and recycling where possible.

Our Products

Walrus-manufactured orthopaedic products provide a complete product solution for modern orthopaedic management.

Our Brands

Walrus markets its orthopaedic products under the *Bodyworks*, *Bracewear* and *Bodytechnic* brands.



Prices

We aim to deliver quality products at competitive prices. The majority of our products are locally made and are therefore less affected by exchange rate variations. This helps to ensure stable pricing

Service and Delivery

Walrus stock line products are available ex-stock ensuring that we can offer a quick, “off the shelf” response. Also, because the majority of our products are made in our Auckland factory we are able to offer a prompt and efficient alteration and custom-made service to orthotists, providing efficiency in both time and cost.

Regulatory Requirements and Quality Assurance

Walrus orthopaedic products are made in accordance with the design and manufacture requirements of the European Union Medical Device Directive (93/42/EEC) for class 1 products and have been registered with WAND and PEHNZ.

Customers

We export to many parts of the world, including Australia, Asia, USA, Mexico, Japan, United Kingdom and Europe.

We pride ourselves on the close working relationship we have built up over the years with orthotists and other health professionals both in New Zealand and overseas. This relationship has played a vital role in the ongoing development of our products within New Zealand.

Products, Components & Materials

WALRUS NZ Limited has been at the fore front of developing a range of off -the -shelf orthotics and components for some 20 years. Working closely with medical professionals, Walrus has over the years, brought together their ideas and requirements with its design and manufacturing skills to provide the current range of products.

Walrus Chloroprene Rubber

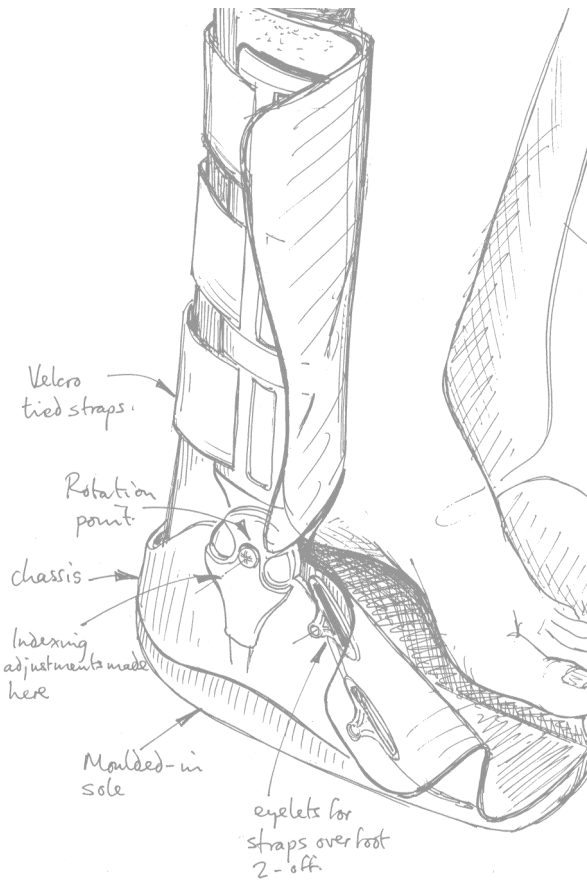
Developed to Walrus's specifications, its Chloroprene Rubber fabrics are made from very high quality closed cell synthetic rubber lined with nylon. Unlike cheaper grades of rubber which can be bulked up with “fillers” that increase its weight and that can also cause the rubber to harden, so losing its elasticity.

Walrus Air-X™

Air-X™ is a new technically advanced fabric developed and tested specifically for orthopaedic products. Air-X™ fabric is engineered from non allergenic fibres; designed to provide compression, support and cushioning. Its lightweight vented construction allows the skin to breathe. These features combine to make it particularly suitable for patients who have allergies to neoprene based products or find them too warm.

Walrus Elasticised Fabrics

All Walrus elasticised fabrics are free from latex and are based on non allergenic Elastane based materials to provide gentle compression and support.



Walrus Moulded products

Walrus has developed a wide range of orthotic components and products using the latest injection moulding techniques and materials that are both light in weight and incredibly strong.

Imported Products

Walrus has a large network of overseas contacts which can be used to source a wide range of products.

Custom Made Products

If you are unable to achieve an accurate fit with an off the shelf product, or you want a variation of a standard product then it may be appropriate to order a custom product. This is generally a simple process involving a few days turnaround. We can also discuss entirely new products, making them if practicable.



WALRUS NEW ZEALAND LIMITED

DOMESTIC GENERAL TERMS AND CONDITIONS

Unless otherwise expressly agreed all sales of products by Walrus New Zealand Limited shall be made upon the following terms and conditions where applicable, and these terms and conditions shall be implied in each order for the sale of all products. In the event of any conflicting terms and conditions in any order received from a customer the supply of products shall be made on the strict basis that the within terms and conditions shall prevail.

Price: Unless otherwise expressly stated all prices are ex-factory in New Zealand dollars and exclusive of goods and services tax (GST), sales tax, insurance, handling and freight, all of which shall be additional charges to the customer. All prices shown in Sales Material and quotations prior to acceptance are subject to change without notice unless otherwise stated.

Payment: Unless otherwise expressly agreed payment of the purchase price of products and all other amounts in respect of each order shall be due on the 20th of the month following the date of invoice or delivery, which ever is the earlier. All payments shall be made in cash without right of deduction or set off and time shall be of the essence in payment. In addition to any other remedies for non payment Walrus New Zealand Limited reserves the right to (a) charge interest on all overdue amounts from the due date for payment until payment at the overdraft lending rate of its bankers over that period, such interest to be calculated on a daily basis and payable upon demand and (b), recover from the customer all costs reasonably expended in the recovery of such outstanding amounts including collection commissions, legal and other enforcement costs.

Title and risk: Title in the products supplied shall not pass to the customer in any circumstances until payment of the purchase price and all other amounts is received in full for those products. Possession or delivery of products shall not be construed as passing of title and Walrus New Zealand Limited reserves the right to recover possession of the products and to enter upon the customer's premises without notice for such a purpose in the event of non-payment.

Risk in the products being uplifted or dispatched to the customer even should payment not have been received in full.

Warranties and representations: No warranties or representations are made or implied in respect of the products except as expressly stated or as may be required or implied in law.

The customer will be deemed to have accepted each order unless written notice of any shortage, defect, or other reason for non-acceptance is given within ten days from the date of delivery. Liability in such cases shall be limited to appropriate replacement of missing or defective parts or refund of the appropriate portion of the purchase price for that order.

The customer relies upon its own enquiries and examination of the products and upon such independent advice or consultation as the customer may require for that purpose, and purchases the products upon the customer's own independent knowledge, skill and judgement, particularly as to the particular use or suitability of the products for the customer's purposes and to all other characteristics and specifications of the products.

Where the products have been manufactured by Walrus New Zealand Limited the products will be so manufactured to a good standard using materials, parts and components of good standard. No responsibility is accepted for defects or the failure or deterioration of the parts or components of other manufacturers. No responsibility is accepted for failure or deterioration of the products due to improper handling or storage, contamination or other adverse conditions, alteration or interference by other parties, the use or application of the products outside the normal or intended purposes of the products or outside the directions or limitations imposed by Walrus New Zealand Limited or otherwise in an improper or abnormal manner.

No liability is accepted for any consequential or economic loss arising in respect of the products and the customer shall protect Walrus New Zealand Limited from any claim or demand from other parties in respect of the use or application of the products by the customer.

In no event shall Walrus New Zealand Limited be liable for any amount or claim which exceeds the purchase price or other amounts actually paid for the products by the customer.

Intellectual property rights: The customer does not by reason of the purchase of the products acquire any rights to the copyright, patent, trade mark, design or other intellectual property rights in the products.

No liability is accepted for products which have been manufactured under the directions or specification of the customer and the customer shall protect Walrus New Zealand Limited from any claims for infringement of the intellectual property right of third parties which might result.

General: The sale of the products to the customer shall be on a non-exclusive basis and Walrus New Zealand Limited reserves the right to sell the products to other parties at such prices and terms of sale without limitation. Indent and incentive discounts where offered will be subject to due payment and relevant quantity of the products on each occasion. Walrus New Zealand Limited reserves the right to cancel, suspend the completion or delivery of products where there is reason for cause to believe that due payment will not be received from the customer.

The law and jurisdiction of New Zealand shall apply to the sale and supply of all products.

Contents

Back/Spinal 8-13

Shoulder/Upper Limb 14-19

Foot/Ankle 20-22

Wrist/Thumb 24-26

Hip 25

Knee/Calf 26-37

Orthopaedic Walker Boots 38-40

Display Mannequins 41

Bodyworks OTC Range 42-47

Size Charts 48-51

Materials 52-53

General Information 54-55



Front View



Back View

Abdominal Binder

Follows the clavicle pattern but is made using soft grade medical elastic . It continues to be used following abdominal surgery and treatment of low back fractures.

S	24511	XL	24514
M	24512	XXL	24515
L	24513	XXXL	24516



Back View

T.L.S.O Belt –Tall

- Thoraco-lumbar back pain
- Discogenic back pain
- Postural retraining
- Inhibits flexion and rotation
- Encourages correct posture for lifting
- Maximum patient comfort and compliance

S	24601	L	24603
M	24602	XL	24604



Front View

T.L.S.O Belt –Short

S	24621	L	24623
M	24622	XL	24624



Front View



Back View

Sacral Belt

Clavicle design, but shaped to fit down over the hips. It remains popular for use during pregnancy.

XS	24650	L	24653
S	24651	XL	24654
M	24652		



Front View



Back View

Lumbo Sacral Semi Rigid

All elastic with front adjustable closure. Further support and lift in the abdominal area is achieved by an elasticised over lapping belt. Four spinal stays provide further support and prevent rolling.

S	24661	L	24663
M	24662	XL	24664



Elastic Pregnancy Belt

An adjustable low profile pelvic compression belt which helps provide support during the later stages of pregnancy. Adjustable tension bands either side.

S	24681	L	24683
M	24682	XL	24684
		XXL	24685

Pubic Support Belt

Provides circumventional compression and support to the lower pelvis/ pubis symphysis post child birth.



32'	24720	44'	24726
34'	24721	46'	24727
36'	24722	48'	24728
38'	24723	50'	24729
40'	24724	52'	24730
42'	24725		



Front View



Back View

Lumbo Sacral Stabiliser Black

S	45211	L	45213
M	45212	XL	45214



Soft Collar

S	27401
M	27402
L	27403
XL	27404



Philadelphia® Collar Trach

- Inhibits cervical spine flexion, extension and rotation
-

S	28355
M	28356
L	28357



Bi-Valve TLSO HP

An "off the shelf" thoraco-lumbar sacral orthosis. Made from rigid thermoplastic enabling it to be shaped and trimmed to fit.

Men's

S	28420	L	28422
M	28421	XL	28423

Woman's

S	28425	L	28427
M	28426	XL	28428



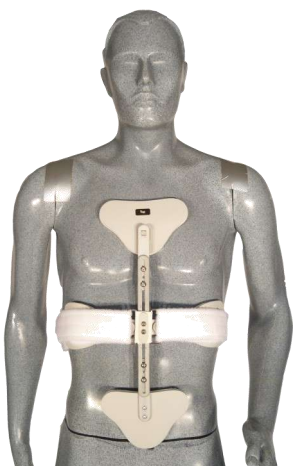
Minerva Jacket

- Provides stabilization of the cervical and upper thoracic spine
- Trachea opening
- Single upright design is easy to fit
- Removable liners and silicone chin pads
- Pre-shaped anterior and posterior uprights
- Height adjustable

Small	28163	Regular	28164
-------	-------	---------	-------

Minerva Jacket Liner Sets

Small	28313	Regular	28314
-------	-------	---------	-------



C.A.S.H.® Brace Universal

Cruciform Anterior Spinal Hyperextension. A comfortable lightweight, universal sized anterior hyperextension orthosis.

#300 (Sternal and Pubic hinge)	28350	#400 (Sternal Hinge only)	28351
--------------------------------------	-------	------------------------------	-------



Aspen® Collar

Designed to optimize support and comfort, two key components for better patient outcomes. The structure of the collar was engineered to provide substantial motion restriction without producing painful pressure points that can lead to skin breakdown or poor patient compliance.

Short	28390	Tall	28392
Regular	28391	X-Tall	28393
Collar Softgoods		28394	



Aspen® CTO Brace Adult

The Aspen® CTO combines highly effective motion restriction of the cervical and upper thoracic spine with a level of comfort that makes it well tolerated by patients.

Regular	28372	Tall	28373
CTO Softgoods		28389	
		and 28394	



Classic Aspen® TLSO

The modular design of the Aspen® Lumbo sacral Bracing System™ lets you progressively tailor the amount of motion restriction to the changing needs of each patient. By removing the shoulder straps, torso control straps, or the padded chest panel, the system can be “stepped down” to parallel the overall progress of the patient.

Short (S)	28165	Tall (S)	28177
Short (L)	28166	Tall (L)	28178
Classic Aspen Softgoods		28176	



Lerman Halo

- Provides cervical stabilization.
- Anterior-only vest assists prevention of posterior skin breakdown.
- Bridges the gap between a halo system and CTO.
- MRI Compatible.

One Size	28113
----------	-------



Air-X™ Chest Binder

Made from Air-X™, breathable and adjustable chest binder with neck straps.

S	28395	L	28397
M	28396	XL	28398



Front View

Back View

Industrial Cinch Back Black

- An elastic lumbar brace with adjustable tension bands and shoulder straps
- Cool and comfortable to wear

S	24741	L	24743
M	24742	XL	24744



Tecnoway CASH Brace

- Anatomical back pad.
- Snap lock with belt adjustment.
- Anticorodal cross frame with evazote padded supports.

Regular	29001
Long	29003



Tecnoway Dorso-Lumbar

- Padded supports and breathable tissue lining.
- Anticorodal alloy frame that can be easily adjusted.
- Suitable for Vertebral inflammation, Osteoporosis & Kyphosis.

XS	29005	M	29007
S	29006	L	29008

Shoulder/Upper Limb



Elbow Tennis I

Plush lined neoprene band with adjustable cinch strap to provide compression.

S	26341
M	26342
L	26343



Elbow Tennis II

Plush lined neoprene sleeve combining adjustable cinch strap to provide compression and warmth.

S	26351
M	26352
L	26353



PP Tennis Elbow

This product consists of a narrow band with a stabilizing pressure pad which is applied over the common proximal extensor muscle bulk just distal to the epicondylitis

S	45005	L	45006
---	-------	---	-------



Padded Elbow

- Arthritic pain
 - Myositis
 - Fibrocystis
 - Bursitis
 - Protection
 - Throwers elbow
 - Made form plush lined neoprene
-

S	26331
M	26332
L	26333



Standard Elbow

- Arthritic pain
- Myositis
- Fibrocystis
- Throwers elbow
- Bursitis
- Neoprene anatomically shaped elbow sleeve with olecranon cut out

S	26301	L	26303
M	26302	XL	26304



Universal Sling

One Size	27712
----------	-------



CS Sling

One Size	28330
----------	-------



Shower Sling (Universal)

One Size	27372
----------	-------



Front View

Clavicle Shoulder Brace

Nylon webbing with padded shoulder straps and chloroprene back panel. For posture and shoulder support.

S/M	27271	M/L	27273
-----	-------	-----	-------



Back View



Back View

Paediatric Clavicle Brace

Nylon webbing with padded shoulder straps and chloroprene back panel.

One Size	27270
----------	-------



Front View

Shoulder Neoprene Adjustable

Double shoulder support made from durable chloroprene adjustable hook and loop fastening.



Back View

S	27261	L	27263
M	27262	XL	27264



Foam Sling

One Size	28331
----------	-------



Shoulder Abduction Support

One Size 28326

OC Shoulder Support

XS	28580	M	28582
S	28581	L	28583
		XL	28584



Forearm AV Fistula/Shunt Protector

Shield is thermo plastic

Made to Measure 45010

DeRoyal DeROM® Elbow Orthosis

- Dynamic splint provides low load prolonged stretch to soft tissue to restore joint's ROM
- Flexion and extension assist in a single unit
- Malleable cuffs for a customized fit
- Tension Limiting Control (TLC) knob prohibits excessive force
- Range of motion stops for static progressive splinting



M/L (9"-12") bicep circ.	28366	L/L (12" +) bicep circ.	28369
M/R (9"-12") bicep circ.	28367	L/R (12" +) bicep circ.	28370

Upper Limb Brace

This brace is comfortable and allows early controlled mobilisation. It reduces rehab time and is economic.



- Post shoulder injury
- Elbow injury
- Humeral fractures
- Soft tissue procedures

S	45011
M	45012
L	45013

Replacement Softgoods-Full Set

S	45018
M	45019
L	45020



Humeral/Forearm Brace

S	45050
M	45051
L	45052



Elbow ROM Hinge Set (pair) with caps

Nylon	45030
Aluminium	45031



Humeral Section 3 Strap

S	45060
M	45061
L	45062



Humeral Section 2 Strap

S	45080
M	45081
L	45082

Humeral Brace Attachment Sling (U)

One Size	45065
----------	-------

Humeral Section Softgoods

S	45071
M	45072
L	45073



Elbow Anterior Fracture Shells

One Size	45029
----------	-------



Tecnoway Elbow ROM

One Size With Hand Support	29010
One Size <u>Without</u> Hand Support	29011

Foot/Ankle



Closed Ankle

- Ankle sprain
- Fracture ache
- Arthritic pain
- Achilles tendon

S	20711
M	20712
L	20713



Ankle Open

- Specifically after ankle injury
- Compresses ankle capsule
- More convenient than a bandage
- Heat and support

S/L	20731	S/R	20732
L/L	20735	L/R	20736



Ankle Stabiliser Black

A lace up bootlet providing optional fit and figure eight straps which encircle the foot and resist inversion.

XS	20764	L	20767
S	20765	XL	20768
M	20766		



Ankle Shell

A moulded composite shell which can be used with the ankle stabiliser to provide added support

One Size	45310
----------	-------



Met/Cushion Pair

S (3-4)	43001	L (7-9)	43005
M (5-6)	43003	XL (10-11)	43007



Heel Cups Silicone Pair

S	43010
M	43011
L	43012

Wrist/Thumb



Wrist Wrap

The wrist wrap is a simple wrap providing adjustable support to the wrist and first metacarpal. It is best used in patients who require support during specific high load activities. It is convenient to use, and easily washed.

Left	25715	Right	25716
------	-------	-------	-------



Wrist Sleeve

The wrist sleeve is preferred by patients with swelling associated pain, and those with symptoms secondary to arthritis. The circumferential band is tensioned to provide the level of support for any given task.

S	25721	L	25723
---	-------	---	-------



Wrist Splint Elastic

The elastic wrist splint is also made in a classic "cock up" splint format.

XS/L	25739	XS/R	25740
S/L	25741	S/R	25742
M/L	25743	M/R	25744
L/L	25745	L/R	25746
XL/L	25747	XL/R	25748

Wrist Splint/Thumb Extension



Made from chloroprene provides warmth and support. The brace has a malleable volar stay and thumb extension.

S/L	25770	S/R	25771
M/L	25772	M/R	25773
L/L	25774	L/R	25775

Air-X™™ - Wrist/Forearm 8"

Made from fully breathable Air-X™ with spandex gusset and hook and loop closure for ease of donning and to provide a secure fit, overall length 20.3 cm



XS/L	45133	XS/R	45134
S/L	45135	S/R	45136
M/L	45137	M/R	45138
L/L	45139	L/R	45140
XL/L	45141	XL/R	45142

Air-X™™ - Wrist/Forearm 10"

Made from fully breathable Air-X™ with spandex gusset and hook and loop closure for ease of donning and to provide a secure fit, overall length 25.4 cm



XS/L	45143	XS/R	45144
S/L	45145	S/R	45146
M/L	45147	M/R	45148
L/L	45149	L/R	45150
XL/L	45151	XL/R	45152



Thumb Wrap

Besides the four classical sizes this is the defined product that can be made to fit all applications.

S	45106	L	45108
M	45107	XL	45109
Made to measure (refer to page 51)			45105



Thumb Spica (Universal)

Made from Foam, featuring a aluminium spoon insert to keep the thumb rigid.

One Size	45121
----------	-------



Tecnoway Hip Orthosis

- Suitable for pre and/or post-surgery.
- Lined with foam padding and finished edges.
- Anatomic shape ensures good stabilization of the hip.
- Features option to tilt sides of pelvis & adjustable straps.

S/L	29024	S/R	29021
M/L	29025	M/R	29022
L/L	29026	L/R	29023



Hip Abduction Device

One Size	28345
----------	-------



Air-X™ Hip Wrap (also available in white)

S/L	46988	S/R	46989
M/L	46990	M/R	46991
L/L	46992	L/R	46993
XL/L	46994	XL/R	46995
XXL/L	46996	XXL/R	46997



Pace Knee Short ROM Air-X™

All models of the Pace are fitted with R.O.M hinges with metal arms stabilised by adjustable circumferential bands. This brace is ideal for mild ACL or PCL instabilities.

XS	46950	L	46953
S	46951	XL	46954
M	46952	XXL	46955



Pace Knee Long ROM Air-X™

Fitted with R.O.M hinges with metal arms stabilised by adjustable circumferential bands. Ideal for mild ACL or PCL instabilities.

XS	46960	L	46963
S	46961	XL	46964
M	46962	XXL	46965



S/Wrap F/E Air-X™

An easily applied wrap around knee support, with removable polycentric hinges giving good medial and lateral support.

XS	46970	L	46973
S	46971	XL	46974
M	46972	XXL	46975



F/Entry Pace Long Knee Air-X™

Fitted with R.O.M hinges with metal arms stabilised by adjustable circumferential bands. Ideal for mild ACL or PCL instabilities.

XS	46980	L	46983
S	46981	XL	46984
M	46982	XXL	46985



Knee Stabiliser Air-X™

A “slip on” style brace fitted with four flexible spiral stays to provide medial/lateral stability.

XS	46920	L	46923
S	46921	XL	46924
M	46922	XXL	46925



Bracer Hinged Knee Air-X™

A lightweight, low profile “slip on” hinged knee support with enclosed bicentric hinges. The bracer is ideal for activities where mild medial/lateral support is required.

XS	46932	L	46935
S	46933	XL	46936
M	46934	XXL	46937



Tracker Knee Air-X™

The tracker knee support is fitted with an elastomeric yoke—a device that can be used to apply a medial or lateral pressure to the patella.

XS	46940	L	46943
S	46941	XL	46944
M	46942	XXL	46945



Universal MKII Knee Air-X™

Suitable for immediate post operative knee orthosis. Ease of use with front entry and multiple adjustable straps.

XS	47006C	L	47009C
S	47007C	XL	47010C
M	47008C	XXL	47011C



Basic Knee

- Simple sleeve for heat, support and compression

S	22111	L	22113
M	22112	XL	22114



Knee Biopatella

- Patella Support
- Additional stability and comfort

S	22131	L	22133
M	22132	XL	22134



Osgood Schlatter

S/M	22171	M/L	22173
-----	-------	-----	-------



Jumpers Knee

S/M	22175	M/L	22177
-----	-------	-----	-------



Knee Anterior Entry

- For those who have difficulty with sleeves
- Excellent for the elderly
- Adjustable

S	22181	L	22183
M	22182	XL	22184



Knee Stabiliser

- Medial and lateral support
- Patella Support
- Biomechanical shape allows freedom of movement

S	22201	L	22203
M	22202	XL	22204



Knee Medial Lateral Stabiliser

S	22211	L	22213
M	22212	XL	22214



Knee Med Lat Stab Post Entry

S	22221	L	22223
M	22222	XL	22224



Knee Rotary Ligament

S	22231	L	22233
M	22232	XL	22234



Knee Patella Stabiliser

S	22241	L	22243
M	22242	XL	22244



Hinged Biopatella

Composite Arms ROM

S	23261	L	23263
M	23262	XL	23264

Composite Arms Non ROM

S	23311	L	23313
M	23312	XL	23314

Metal Arms Condular Pads ROM

S	23265	L	23267
M	23266	XL	23268

Metal Arms Condular Pads Non Rom

S	23315	L	23317
M	23316	XL	23318

Hinged Rotary Ligament



Composite Arms ROM

S	23271	L	23273
M	23272	XL	23274

Composite Arms Non ROM

S	23331	L	23333
M	23332	XL	23334

Metal Arms Condular Pads ROM

S	23275	L	23277
M	23276	XL	23278

Metal Arms Condular Pads Non Rom

S	23335	L	23337
M	23336	XL	23338

Hinged Anterior Entry



Composite Arms ROM

S	23291	L	23293
M	23292	XL	23294

Composite Arms Non ROM

S	23371	L	23373
M	23372	XL	23374

Metal Arms Condular Pads ROM

S	23295	L	23297
M	23296	XL	23298

Metal Arms Condular Pads Non Rom

S	23375	L	23377
M	23376	XL	23378



Calf

- Myositis
- Achilles tendon
- Compartment syndrome
- Fracture ache

S	21041	L	21043
M	21042	XL	21044



Thigh

- Corked Thigh
- Myositis
- Weight training
- Cold weather training

S	21051	L	21053
M	21052	XL	21054



F/E Sportsmaster

Composite Arms ROM

S	23341	L	23343
M	23342	XL	23344

Metal Arm Condular Pad ROM

S	23345	L	23347
M	23346	XL	23348



Knee Stabiliser Black

S	46010	L	46012
M	46011	XL	46013



3 Panel Immobiliser

16.5'	45477
19.5'	45478
23.0'	45479

K.I Replacement Panel

16.5'	45480
19.5'	45481
23.0'	45482



Knee Immobiliser 20"

One Size 45475

ROM Braces

Short ROM	46098	Long ROM	46105
Mid ROM	46100	Long/X Long ROM	46107
Mid/Long ROM	46102	XX Long ROM	46108

Replacement Softgoods For ROM Braces

Mid ROM	46110	Long/X Long ROM	46113
Mid/Long ROM	46111	XX Long ROM	46114
Long ROM	46112		



Unicentric ROM (Universal)

One Size 46096

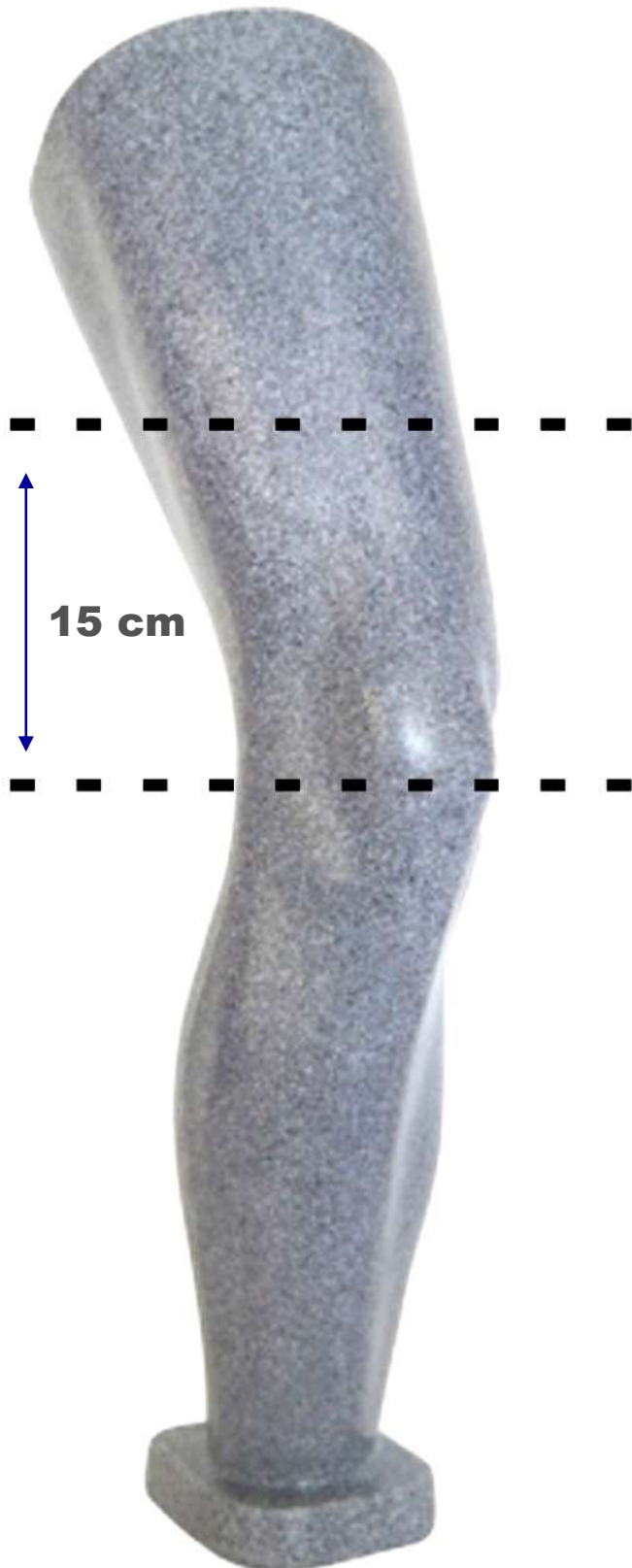
Unicentric ROM Liners

One Size 46097



KNEE SIZING INSTRUCTIONS

Circumferential measurement
of the thigh 15 cm above
centre of knee



**Circumference measurement of
leg 15 cm above the mid-patella.**

XS	12-15"	30.5 - 38 cm
S	15-18"	38 - 45.5 cm
M	18-21"	45.5 - 53 cm
L	21-24"	53 - 61 cm
XL	24-27"	61 - 68.5 cm
XXL	27-30"	68.5 - 76 cm

OR

Hinges



46170
Cast Brace Hinge (Pair) ROM

46171
Cast Brace Hinge (Pair) Non ROM



54202
Bicentric alloy hinge non ROM



54210
Bicentric hinge 270mm metal non ROM



54236
ROM hinge metal 270mm C/P



54230
ROM hinge composite 270mm



54205
Bicentric hinge composite non ROM



54241
ROM hinge metal 370mm



54206
Bicentric hinge composite non
ROM C/P



54247
ROM hinge metal 440mm



54238
ROM hinge composite 370mm

Orthopaedic Walker Boots

Orthopaedic Walkers

A unique design where the weight bearing surfaces of the foot rest on adaptive areas of the sole.

- Strong moulded chassis
- Low heel height with slip resistant rocker sole
- Washable liner made from breathable foam and durable brushed nylon exterior



The Ankle Walker

S	46775
M	46776
L	46777



The Squirt

S	46801
M	46802
L	46803



The Impact

S	46810
M	46811
L	46812



Fixed Arm Walker

XS	46874
S	46875



ROM Walker

S	46880
M	46881
L	46882



The Impact Ranger

The arms can be set at 0°, 10°, 20°, 30° to vertical. (Shown at 30°)

S	46862
M	46863
L	46864



Walker Softgoods

Impact -3 Strap	Squirt -2 Strap	Ankle -1 Strap
S 46835	S 46831	S 46840
M 46836	M 46832	M 46841
L 46837	L 46833	L 46842



Pediatric Walker

S	46807	M	46808
---	-------	---	-------



Achilles Wedge (U)

One Size	45618
----------	-------



Achilles Wedge (Small)

S	45619
---	-------

Display Mannequins



Mannequin Complete (Graphite)

One Size 35011



Mannequin Knee (Graphite)

One Size 35012



Mannequin Ankle (Graphite)

One Size 35013

Bodyworks OTC Range



Thigh

- Corked Thigh
- Myositis
- Weight training
- Cold weather training

S	19521	L	19523
M	19522	XL	19524



Calf

- Myositis
- Achilles tendon
- Compartment syndrome
- Fracture ache

S	19411	L	19413
M	19412	XL	19414



Standard Elbow

- Arthritic pain
- Myositis
- Fibrocytis
- Throwers elbow
- Bursitis

S	16301	L	16303
M	16302	XL	16304



Padded Elbow

- Arthritic pain
- Myositis
- Fibrocytis
- Bursitis
- Protection
- Throwers elbow

S	16331	L	16333
M	16332	XL	16334



Tennis Elbow

- Tennis elbow
- Golfers elbow
- Throwers arm

S	16341	L	16343
---	-------	---	-------



Wrist Wrap

- Wrist Sprain
- Fracture ache
- Tendonitis
- Wrist support

Left	15715	Right	15716
------	-------	-------	-------



Wrist Sleeve

- Wrist Sprain
- Fracture ache
- Tendonitis
- Wrist support

S	15721	L	15723
---	-------	---	-------



Closed Ankle

- Ankle sprain
- Fracture ache
- Arthritic pain
- Achilles tendon

S	10711
M	10712
L	10713



Open Ankle

- Specifically after ankle injury
- Compresses ankle capsule
- More convenient than a bandage
- Heat and support

S/L	10731	S/R	10732
L/L	10735	L/R	10736



Front View

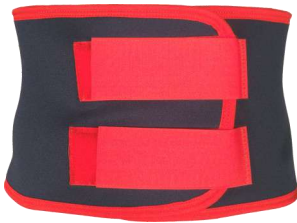


Back View

Bioform Lumbar Stabiliser

- Support for the abdominal and lower back muscles
- Stabilises and encourages improved posture

S	14666	L	14668
M	14667	XL	14669



Front View



Back View

Lumbar

- Back Pain/ Sciatica
- Support and warmth

S	14631	L	14633
M	14632	XL	14634



Knee Biopatella

- Patella support
- Additional stability and comfort

S	12131	L	12133
M	12132	XL	12134



Knee Front Entry

- For those who have difficulty with sleeves
- Excellent for the elderly
- Adjustable

S	12181	L	12183
M	12182	XL	12184



Knee Tri Panel

- Simple sleeve for heat, support and compression

S	12141	L	12143
M	12142	XL	12144



Padded Knee

- Simple sleeve with additional padding for comfort and protection

S	12121	L	12123
M	12122	XL	12124

Size Guides

Spinal & Maternity Size Guide	
Waist Measurement	Size
66 – 72 cm	X Small
72 – 81 cm	Small
81 – 97 cm	Medium
97 – 112 cm	Large
> 112 cm	X Large

Ankle Size Guide	
Ankle Circumference	Size
< 16.5 cm	X Small
16.5 – 20 cm	Small
20 – 23 cm	Medium
23 – 27 cm	Large
> 23 – 27 cm	X Large

Upper Limb Size Guide	
Measurement	Size
Child/Small Adult	Small or Small/Medium
Medium/Large Adult	Medium or Medium/Large

Calf Size Guide	
Calf Circumference	Size
30.5 – 35.5 cm	Small
35.5 – 40.5 cm	Medium
40.5 – 45.5 cm	Large
+ 45.5 cm	X Large

Shoulder Size Guide	
Forearm Circumference	Size
20 – 28 cm	Small
28 – 37 cm	Medium
37 – 48 cm	Large

Knee Size Guide	
Circumference taken 15.5 cm above the mid-patella	Size
30.5 – 38 cm	X Small
38 – 45.5 cm	Small
45.5 – 53 cm	Medium
53 – 61 cm	Large
61 – 68.5 cm	X Large
68.5 – 76 cm	XX Large

Elbow Size Guide	
Max Elbow Circumference	Size
20 - 25.5cm	Small
25.5 - 30.5 cm	Medium
30.5 - 35.5 cm	Large
> 35.5 cm	X Large

Orthopaedic Walker Size Guide	
Female Shoe Size	Size
Up to 7	Small
7 -11	Medium
11 +	Large
Male Shoe Size	Size
Up to 6	Small
6 -10	Medium
10 +	Large

Wrist Size Guide	
Wrist Circumference	Size
< 13.75 cm	X Small
13.75 – 16 cm	Small
16 – 18 cm	Medium
18 – 21 cm	Large
> 21 cm	X Large

Thigh Size Guide	
Thigh Circumference	Size
45.5 – 53 cm	Small
53 – 61 cm	Medium
61 – 69 cm	Large
+ 69 cm	X Large

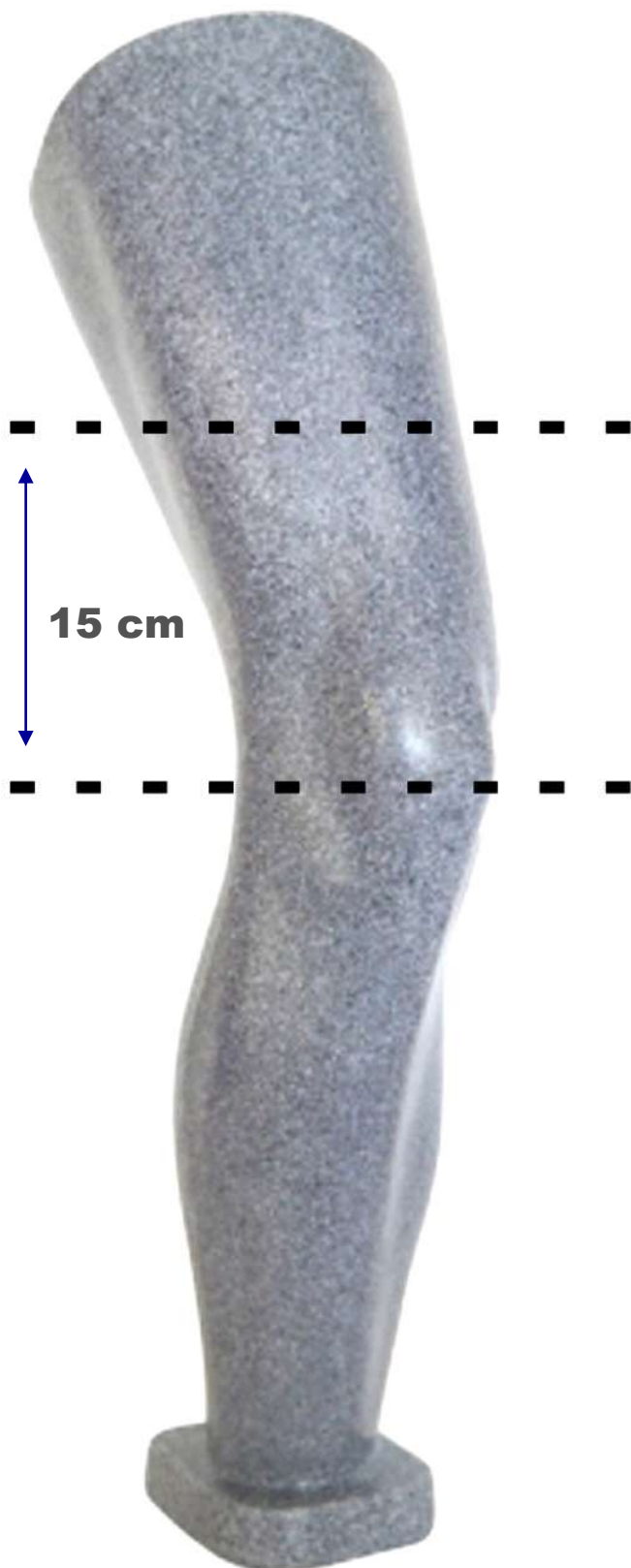
Abdominal Size Guide	
Waist Measurement	Size
66 – 72 cm	X Small
72 – 81 cm	Small
81 – 97 cm	Medium
97 – 112 cm	Large
112 - 120 cm	X Large
120 - 130 cm	XX Large
130 - 140+ cm	XXX Large

Bi-Valve TLSO Size Chart						
Men's						
	Chest bed to bed	Chest Circumference	Waist bed to bed	Waist Circumference	Hips bed to bed	Hips Circumference
Small	57 cm	98 cm	52 cm	88 cm	56cm	97 cm
Medium	61 cm	105 cm	56 cm	97 cm	59 cm	104 cm
Large	66 cm	112 cm	63 cm	107 cm	66 cm	113 cm
X-Large	72 cm	129 cm	66 cm	118 cm	72 cm	129 cm
Women's						
	Chest bed to bed	Chest Circumference	Waist bed to bed	Waist Circumference	Hips bed to bed	Hips Circumference
Small	52 cm	84 cm	48 cm	75 cm	52 cm	85 cm
Medium	57 cm	95 cm	51 cm	84 cm	56 cm	97 cm
Large	61 cm	105 cm	54 cm	96 cm	60 cm	110 cm
X-Large	69 cm	119 cm	60 cm	108 cm	65 cm	120 cm

NB. Measurements are approximate only.

KNEE SIZING INSTRUCTIONS

Circumferential measurement
of the thigh 15 cm above
centre of knee



**Circumference measurement of
leg 15 cm above the mid-patella.**

XS	12-15"	30.5 - 38 cm
S	15-18"	38 - 45.5 cm
M	18-21"	45.5 - 53 cm
L	21-24"	53 - 61 cm
XL	24-27"	61 - 68.5 cm
XXL	27-30"	68.5 - 76 cm

OR

MADE TO MEASURE HAND SPLINT ORDER FORM

Name: _____

Phone: _____ Email: _____

Postal address: _____

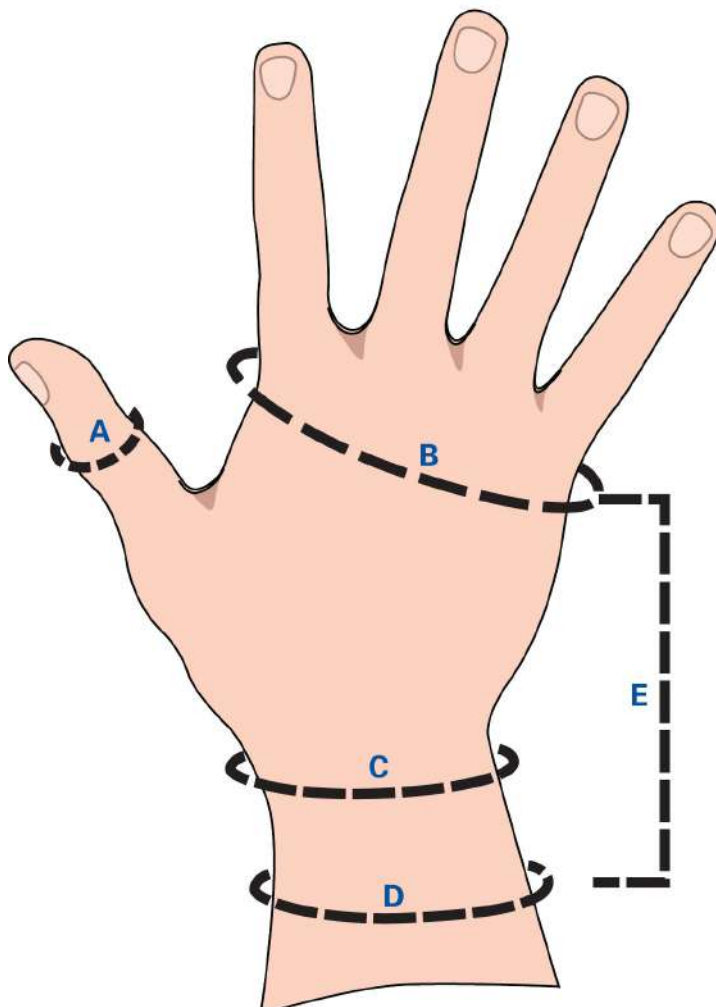
Delivery address (if different): _____

Order no or reference name: _____

Hand: Left. Right. Both.

Materials (std): 3mm black jersey neoprene, plush lined.

Sizing: Please measure the hand as indicated and write your measurements in the spaces on the right.



Measurement in mm:	
	A circumference of thumb
	B circumference of hand at the base of the fingers
	C circumference of wrist at the smallest point
	D circumference of wrist at the point where you want the splint to end
	E Overall length of splint (i.e. measure from B to D)



Materials

Walrus can provide a range of material that can be used in the fabrication of orthopaedic braces and devices

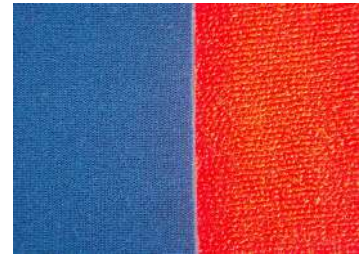
Chloroprene closed cell foam rubber

Provides warmth, compression cushioning and support.

Supplied in sheets: 1200mm x 2200mm approx.

1200mm x 1000mm approx.

3 mm	Beige Nylon Jersey	X	Royal Blue Plush Nylon lined
3 mm	Black Nylon Jersey	X	Charcoal Plush Nylon
3 mm	Navy Nylon Jersey	X	Red Nylon Jersey
4 mm	Navy Blue Nylon Jersey	X	Red Plush Nylon
1.5 mm	Navy Blue Nylon Jersey	X	Red Nylon Jersey
1.5 mm	Black Nylon Jersey	X	Charcoal Plush Nylon
1.5 mm	Beige Nylon Jersey	X	Royal Blue Plush Nylon lined



Double Loop webbing

A 50mm wide non elasticised Velcro compatible flat strapping which is of tubular construction.



10 mm open cell foam lined one side with black Velcro compatible brushed nylon, lined other side with beige jersey

Per metre measuring approx 1400 mm wide



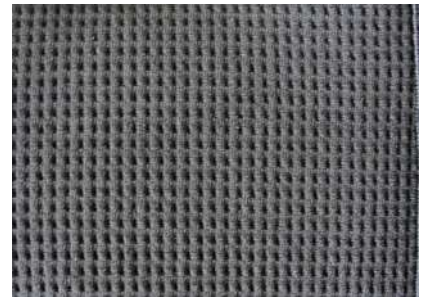
Velstretch

Elasticised Velcro strap
38 mm wide per metre
50 mm wide per metre



Air-X™

A technically advanced four way stretch fabric developed and tested specially for orthopaedic. Air-X is engineered from non allergenic fibres; designed to provide compression support and cushioning. Its light weight vented construction allows the skin to breathe. Per metre measuring approx. 1300 mm wide



Velcro® Compatible - Hook & Loop

25mm	38mm	50mm
Black	Black	Black
Beige	Red	Beige
White		Red
		White



Periodically others sizes available

Chicago Screws Sets

Bronze screw and post fastening system. 4mm diameter post screw extends to 10mm gap.



Cam Clip



General Information

Bodyworks thermal supports provide superior treatment and prevention system for joint, muscle, ligament and tendon injuries. Scientifically designed and field tested, Bodyworks supports have proven effective in the treatment of most soft tissue injuries

Why they work

In general, there are four main mechanisms of action; the function of the mechanism varies slightly from product to product.

The four functions are:

Compression

When injury occurs inflammatory fluid accumulates at the injury site, this is the primary cause of pain. The compression provided by the brace slows the accumulation of fluid and thus reduces pain without compromising the body's natural healing reaction.

Heat Retention

The Chloroprene laminate-based products used in our braces retain natural body heat. They do not generate heat as is sometimes claimed. The retention of heat enhances circulation because of the bodies natural temperature control mechanism. Enhanced circulation assists in healing and lowers the incidence of some important common injuries.

Support

This is where the brace provides supplementary support to the muscles and ligaments so helping to lessen the risk of injury.

Enhanced Proprioception

Stimulation of the underlying skin receptors, which provide the brain with information about the exact position of the body part at the time, is enhanced. This is called Proprioception (sense of position). When the Proprioception input is amplified the resultant outgoing brain signal to the muscles is faster, more precise and stronger. The result is termed "enhanced muscle reactivity".

Product Guarantee

Unless otherwise stated, Bodyworks products are guaranteed against faulty materials or workmanship for a period of three months from date of purchase. Defective product returned to the point of purchase or sent to the nominated distributor, will be repaired or replaced at the discretion of Bodyworks personnel. Proof of purchase date will be required to make a claim. Constructive product criticism is welcome at any time.

Fitting Instructions & Precautions

Please read carefully.

- Use the sizing guides provided to select the correct product.
- These are to be used as a guide only. Anatomical variances prevent more specific information.
- Position the product and make sure it is comfortable.
- Products should be firm and not tight.
- Check that the circulation is not compromised after the product is fitted.
- Remove the product if the leg, foot, arm or hand swells.

Do Not's

- Do not sleep with the support or brace on unless advised to do so by a responsible healthcare professional.
- Do not use the products adjacent to, or over skin where liniments or oils have been applied.
- Do not persist in using the product if prolonged skin reaction occurs. Allergic response is rare. An initial and temporary localized hyperaemic response is relatively common. It generally subsides within the first two days.

Specifications

- Premium quality Neoprene with elasticised binding tape
- Anatomical shape - biomechanical design
- Four-way stretch nylon jersey laminate externally
- Plush lining

Product Care

- Wash in warm soapy water.
- Dry naturally or low heat dryer.
- Do not use detergents or bleaches.
- Do not use in conjunction with oil, ointment or liniments adjacent to the support.

Walrus New Zealand Limited

PO Box 11 209
Ellerslie
Auckland
New Zealand

Free Phone
0508 272 236

Bodyworks and Bracewear are brand names of Walrus NZ Limited. Unauthorised use without the written permission of Walrus NZ Limited is prohibited. Many of the products depicted in this catalogue are subject to patents or design registration, unlicensed reproduction is not permitted without the written permission of Walrus NZ Limited. Walrus NZ Limited reserves the right to change specifications without notice.

info@walrus.co.nz • www.walrus.co.nz • P: +64-9-570 9316