

Original Contribution

# Oxygen-sensitive reset of hypoxia-inducible factor transactivation response: Prolyl hydroxylases tune the biological normoxic set point

Savita Khanna<sup>a</sup>, Sashwati Roy<sup>a</sup>, Mariah Maurer<sup>a</sup>, Rajiv R. Ratan<sup>b</sup>, Chandan K. Sen<sup>a,\*</sup>

<sup>a</sup> *Laboratory of Molecular Medicine, Davis Heart & Lung Research Institute, Department of Surgery, The Ohio State University Medical Center, Columbus, OH 43210, USA*

<sup>b</sup> *Department of Neurology and Neuroscience, Burke/Cornell Medical Research Institute, Weill Medical College of Cornell, White Plains, NY 10605, USA*

Received 4 January 2006; revised 2 February 2006; accepted 16 February 2006

Available online 9 March 2006

## Abstract

Cellular O<sub>2</sub> sensing enables physiological adjustments to variations in tissue pO<sub>2</sub>. Under basal conditions, cells are adjusted to an O<sub>2</sub> environment biologically read as normoxia. Any sharp departure from that state of normoxia triggers O<sub>2</sub>-sensitive biological responses. The stabilization of hypoxia-inducible factor (HIF) signifies a robust biological readout of hypoxia. In the presence of sufficient O<sub>2</sub>, HIF is hydroxylated and degraded. HIF prolyl hydroxylation is catalyzed by prolyl hydroxylase isoenzymes PHD1, 2, and 3. Using HT22 neurons stably transfected with a HIF reporter construct, we tested a novel hypothesis postulating that biological cells are capable of resetting their normoxic set point by O<sub>2</sub>-sensitive changes in PHD expression. Results of this study show that the pO<sub>2</sub> of the mouse brain cortex was 35 mm Hg or 5% O<sub>2</sub>. Exposure of HT22, adjusted to growing in 20% O<sub>2</sub>, to 5% O<sub>2</sub> resulted in HIF-driven transcription. However, cells adjusted to growing in 5% O<sub>2</sub> did not report hypoxia. Cells adjusted to growing in 30% O<sub>2</sub> reported hypoxia when acutely exposed to room air culture conditions. When grown under high O<sub>2</sub> conditions, cells reset their normoxic set point upward by down-regulating the expression of PHD1–3. When grown under low O<sub>2</sub> conditions, cells reset their normoxic set point downward by inducing the expression of PHD1–3. Exposure of mice in vivo to a hypoxic 10% O<sub>2</sub> environment lowered blood as well as brain pO<sub>2</sub>. Such hypoxic exposure induced PHD1–3. Exposure of mice to a hyperoxic 50% O<sub>2</sub> ambience repressed the expression of PHD1–3, indicating that O<sub>2</sub>-sensitive regulation of PHD expression is effective in the brain in vivo. siRNA dependent knockdown of PHD expression revealed that O<sub>2</sub>-sensitive regulation of PHD may contribute to tuning the normoxic set point in biological cells. © 2006 Elsevier Inc. All rights reserved.

**Keywords:** Oxygen; Ischemia; Reperfusion

## Introduction

Cellular O<sub>2</sub> homeostasis is tightly maintained within a narrow range (perceived as “normoxia”) due to the risk of oxidative damage from excess O<sub>2</sub> (hyperoxia), and of metabolic demise from insufficient O<sub>2</sub> (hypoxia) [1]. pO<sub>2</sub> ranges from 90 to below 3 Torr in mammalian organs under normoxic conditions with arterial pO<sub>2</sub> of about 100 Torr or ~14% O<sub>2</sub> [2]. Thus, “normoxia” for cells may be viewed as a variable that is dependent, for example, on the specific localization of the cell

in organs and functional status of the specific tissue. Any sharp departure from that state of normoxia, both hypoxia and hyperoxia, triggers O<sub>2</sub>-sensitive signaling and functional biological responses [3–6]. Reoxygenation associated with reperfusion of an ischemic site causes hyperoxic challenge [3,4]. On the other hand, focal occlusions in the vasculature, for example, may compromise the local state of oxygenation such that the pO<sub>2</sub> is lower than normoxia causing hypoxia. Hypoxia may induce specific molecular responses causing functional changes in the tissue [7]. Because sharp deviations from the normoxic set point seem to have a significant impact on tissue biology, it is important to understand the principles that influence a cell’s decision to accept any given pO<sub>2</sub> as normoxia.

The activation of hypoxia-inducible transcription factor (HIF) has emerged as a robust biological readout of cellular hypoxia [8]. While pO<sub>2</sub> serves as an accurate physical measure

*Abbreviations:* HIF, hypoxia-inducible factor; LDH, lactate dehydrogenase; PCR, polymerase chain reaction; PHD, prolyl hydroxylase; SDS, sodium dodecyl sulfate.

\* Corresponding author. 512 DHLRI, 473 W. 12th Avenue, Columbus, OH 43210, USA. Fax: +1 614 247 7818.

E-mail address: [chandan.sen@osumc.edu](mailto:chandan.sen@osumc.edu) (C.K. Sen).

of the state of oxygenation, lowering of  $pO_2$  coupled with activation of HIF is viewed as biologically effective hypoxia. Once stabilized in the presence of  $O_2$  [8], HIF binds to the hypoxia response element to induce the expression of a number of HIF-regulated genes. HIF $\alpha$  activity is regulated by a series of oxygen-dependent enzymatic hydroxylations at specific prolyl and asparaginyl residues. HIF prolyl hydroxylation is performed by a closely related set of prolyl hydroxylase (PHD) isoenzymes [9]. In this study, we sought to test the hypothesis that cells are capable of resetting their normoxic set point by  $O_2$ -sensitive changes in PHD expression.

## Materials and methods

### Materials

Dulbecco's modified Eagle's medium, fetal calf serum, hygromycin B, penicillin, and streptomycin were obtained from Invitrogen Corporation (Carlsbad, CA). Cell culture dishes were from Nunc (Denmark). The PHD1 expression plasmid was a kind gift from Dr. P.J. Ratcliffe of the University of Oxford, UK.

### Cell culture

Stable cell lines expressing an HRE-luciferase reporter were obtained by transfection of HT22 cells with an enolase 1 promoter-reporter construct as described previously [10,11]. Cells were maintained in Dulbecco's modified Eagle's medium with high glucose, L-glutamine, pyridoxine hydrochloride supplemented with 10% fetal calf serum, 0.1 mg/ml hygromycin B, 100 units/ml penicillin, and 100  $\mu$ g/ml streptomycin at 37°C in humidified culture incubators where desired  $O_2$  ambience was maintained using an electronic OxyCycler (BioSpherix, Redfield, NY).

### Determination of cell viability

The viability was assessed by measuring lactate dehydrogenase (LDH) leakage from cells to media following oxygen exposure (0.5, 20, or 30%) for different time intervals as noted in figures using an in vitro toxicology assay kit from Sigma Chemical Co. (St. Louis, MO). In brief, LDH leakage was determined using the following equation: LDH leakage = LDH activity in the cell culture media / total LDH activity (i.e., LDH activity of cells in monolayer + LDH activity in the cell culture media) [12].

### $pO_2$ of culture media

Dissolved oxygen of cell culture media was determined using the OxyLite E Tissue Oxygenation and Temperature Monitor System (Oxford Optronix Ltd., Oxford, UK).

### Luciferase assay

For luciferase assay cells were seeded in 35-mm plates at a density of  $0.2 \times 10^6$  cells per plate in 2 ml media.

Cells were maintained in the specified  $O_2$  environments for the designated time intervals. When required, cells were extracted for the measurement of luciferase activity using a commercial assay kit (Stratagene, La Jolla, CA) according to the manufacturer's protocol. Luminescence was measured using a LB 9507 luminometer (EG and G Berthold, Bad Wildbad, Germany). Results were expressed as percentage change in relative light units (RLU)/mg of total protein.

### Expression of PHD1 in cells

Following 18 h of seeding, HT22 cells were transiently transfected with either the empty expression plasmid pcDNA3 or the expression plasmid PHD1 (EGLN2) using Lipofectamine2000 reagent (Invitrogen Corporation) according to the manufacturer's instructions. The cells were maintained in regular culture condition for 24 h to allow for protein expression.

### Immunoblot analyses

For PHD1 immunoblot, cytosolic protein extract of cells transiently transfected with pcDNA 3 or PHD1 plasmid was separated on a 10% SDS-polyacrylamide gel under reducing conditions, transferred to PVDF membrane, and probed with anti-PHD1 antibody (1:1000 dilution; Bethyl laboratories, Inc. Montgomery, TX). For HIF1 $\alpha$  immunoblot, cytosolic protein extract (50  $\mu$ g/sample) of cells was separated on a 10% SDS-polyacrylamide gel under reducing conditions, transferred to PVDF membrane, and probed with anti-HIF1 $\alpha$  polyclonal antibody (1:1000 dilution; Novus Biologicals, Inc. Littleton, CO).

### siRNA delivery

Cells ( $0.15 \times 10^6$  cells/well in 12-well plate) were seeded in antibiotic-free medium for 24 h prior to transfection. Lipofectamine2000 reagent (Invitrogen Corporation) was used to transfect cells with 100 nM siRNA pool (Dharmacon RNA technologies, Lafayette, CO) for 48 h. For control siControl nontargeting siRNA pool (mixture of 4 siRNA, designed to have  $\geq 4$  mismatches with known mouse genes) was used.

### mRNA quantification

For RNA isolation in in vitro experiments, cells were seeded in 100-mm plates at a density of  $1.5 \times 10^6$  cells per plate in 8 ml media. The cells were maintained in the specified  $O_2$  environment described in the pertinent figure legends for 24 h. After 24 h, total RNA was isolated from cells using Absolutely RNA Miniprep Kit (Stratagene) according to the manufacturer's protocol. The abundance of mRNA for PHD1–3 was quantitated using real-time PCR. The double-stranded DNA binding dye SYBR green-I was used. The following primer sets were used: m\_GAPDH F, 5'- ATG ACC ACA GTC CAT GCC ATC ACT

-3'; m\_GAPDH R, 5'- TGT TGA AGT CGC AGG AGA CAA CCT -3'; m\_PHD1\_EGLN2 F, 5'- GCG TCT TCG TGA TGG GCA ACT A -3'; m\_PHD1\_EGLN2 R, 5'- TGC GCC CAT TGA CGTAGT T -3'; m\_PHD2\_EGLN1 F, 5'- GGA GAT GGA AGA TGC GTG ACA TGT -3'; m\_PHD2\_EGLN1 R, 5'- TGC TGG CTG TAC TTC ATG AGG GTT A -3'; m\_PHD3\_EGLN3

F, 5'- TCG GCT TCT GCT ACC TGG ACA A -3'; m\_PHD3\_EGLN3 R, 5'- GTC GAT GAG GGA CAG GAG GAA GTT -3'; m\_HIF1 $\alpha$  F, 5'- GCG ACA CCA TCA TCT CTC TGG ATT -3'; m\_HIF1 $\alpha$  R, 5'- GGG CAT GGT AAA AGA AAG TCC CAG T -3'; Note that EGLN1, 2, 3 represents PHD2, 1, and 3, respectively.

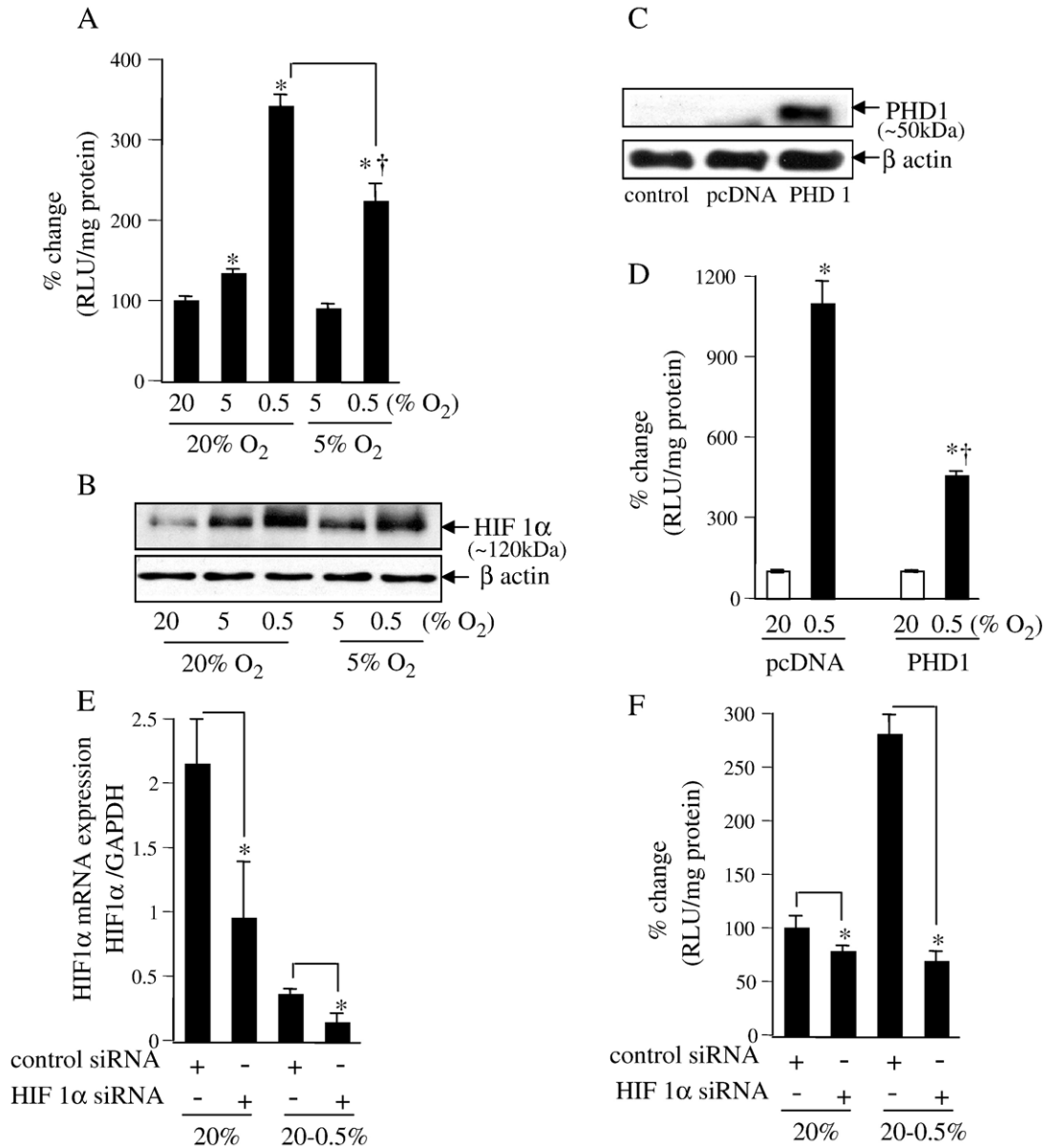


Fig. 1. HIF activity in response to changes in ambient O<sub>2</sub> environment in cells maintained in either room air (20%) or 5% O<sub>2</sub>. (A and B) HT22 cells stably transfected with HRE-luciferase reporter constructs were maintained in 20 or 5% oxygen for 4 weeks before the start of the experiments. For experiments, cells were plated and maintained in the basal O<sub>2</sub> ambience (i.e., either in 20 or 5%) for 24 h. After this period, cells were either moved (hypoxic exposure) or not (control) to the lower (5 or 0.5%, as indicated) O<sub>2</sub> ambience. Luciferase activity was determined as a measure of HIF-driven transcription (A). Stabilized HIF1 $\alpha$  protein was detected by Western Blot (B). \**P* < 0.05; higher compared to the corresponding control group maintained in 20% O<sub>2</sub>. †*P* < 0.05; lower compared to the 20 → 0.5% group. Results are mean ± SD. (C and D) PHD overexpression (B) decreased hypoxia-induced HRE-luciferase activity (C). Cells maintained in 20% O<sub>2</sub> were transfected with control plasmid (pcDNA 3) or PHD1 plasmid using Lipofectamine 2000. One day (24 h) later, cells were moved to 0.5% O<sub>2</sub> ambience for 24 h and then luciferase activity was measured. \**P* < 0.05; higher compared to the corresponding control group maintained in 20% O<sub>2</sub>; † lower compared to the pcDNA 0.5% group. (E and F) Knockdown of HIF1 $\alpha$  (D) abrogated HIF activity (E) observed in A and C. Cells maintained in 20% O<sub>2</sub> ambience were plated using antibiotic-free culture media for 24 h before transfection. Cells were transfected with 100 nM per sample with control siRNA (nontargeting siRNA pool) or HIF1 $\alpha$  mRNA targeting siRNA pool as indicated. Cells were cultured for 48 h after transfection and then exposed to hypoxia (E) for 24 h before being harvested for mRNA quantitation or determination of luciferase activity. \**P* < 0.05; lower compared to the corresponding control group as shown.

### In vivo studies

Adult male C57BL/6 mice (Harlan, Indianapolis, IN) were randomly divided into two groups to be held in an environmental chamber: room air (RA) and hypoxia (10% O<sub>2</sub>). After 24 h of exposure to either room air or hypoxia, brain samples were collected and total RNA was isolated using Trizol. RNA, thus obtained, was cleaned up using Absolutely RNA Miniprep Kit (Stratagene) according to the manufacturer's protocol. Real-time PCR was performed as described above for HT22 cells.

Mice in the hypoxia and hyperoxia groups were held in a 10 or 50% O<sub>2</sub> environmental chamber, respectively. O<sub>2</sub> concentration in the chamber was monitored and automatically adjusted by electronic oxygen controllers (Pro-Ox, BioSpherix, Redfield, NY). Chamber CO<sub>2</sub> (<0.03%) and humidity (40–50%) were maintained using CO<sub>2</sub>-absorbant soda lime and hygroscopic silica gel, respectively. The chamber is fitted with a fan to facilitate the mixing of gas and dissipation of heat. Within the environmental chamber, mice were individually housed in standard cages supported with food and water. Control mice were housed under similar conditions in the chamber containing room air. The custom-designed chamber (glove box) was fitted with two pairs of gloves and an antechamber. This design allows the replacement of cages and handling of mice for blood collection without any transient change in environmental pO<sub>2</sub> of the main compartment. The chamber allows the insertion of cables (e.g., O<sub>2</sub> sensing OxyLite, Oxford Optronix) while the mice are held in the chamber at the designated O<sub>2</sub> ambience. During all experiments, mice were provided with standard breeding rodent chow and water ad libitum. All animal protocols were approved by the Institutional Laboratory Animal Care and Use Committee (ILACUC) of the Ohio State University, Columbus, Ohio.

### Tissue pO<sub>2</sub>

Mouse brain cortical pO<sub>2</sub> was determined using the OxyLite E Tissue Oxygenation and Temperature Monitor System (Oxford

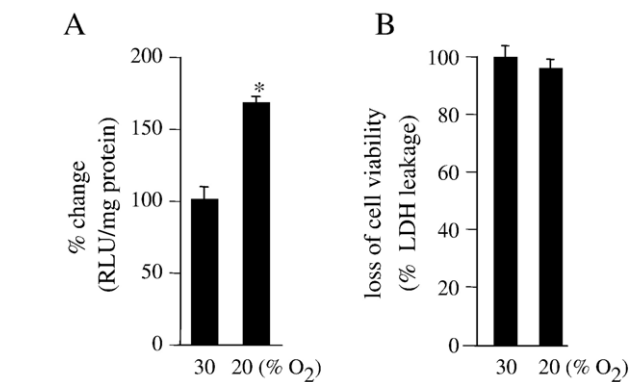


Fig. 3. Inducible HIF activity is dependent on the O<sub>2</sub> ambience to which the cells are adjusted to and not on absolute pO<sub>2</sub>. (A) Cells were plated and maintained in 30% O<sub>2</sub> ambience for 24 h. After this period, cells were either moved to 20 or 30% ambience as indicated. After another 24 h of culture, luciferase activity was measured. (B) The said changes in O<sub>2</sub> ambience did not influence cell viability (also see Fig. 2B). Results are mean  $\pm$  SD. \**P* < 0.05.

Optronix Ltd.). The brain pO<sub>2</sub> of control mice maintained in ambient room oxygen (*n* = 4) was compared to that of mice (*n* = 4) maintained in 10% O<sub>2</sub> ambience for 24 h. Control mice were anesthetized with halothane in room air (21% O<sub>2</sub>) while hypoxic mice were anesthetized with halothane in 10% O<sub>2</sub>. While under anesthesia, the skull was exposed via a small incision and a 2-mm burr hole was drilled over the right hemisphere of the cortex just distal to the bregma suture line, keeping the dura intact. The fiber-optic probe was then passed through the dura into the cortex a distance of 3 mm and then pulled back 0.5 mm to relieve any pressure the probe may be exerting on tissue. For the detection of blood pO<sub>2</sub>, mice were bled from the retro-orbital vein while in the environmental chamber.

### Data presentation

Results of at least three experiments are expressed as means  $\pm$  SD. Difference between means was tested by the Student *t* test.

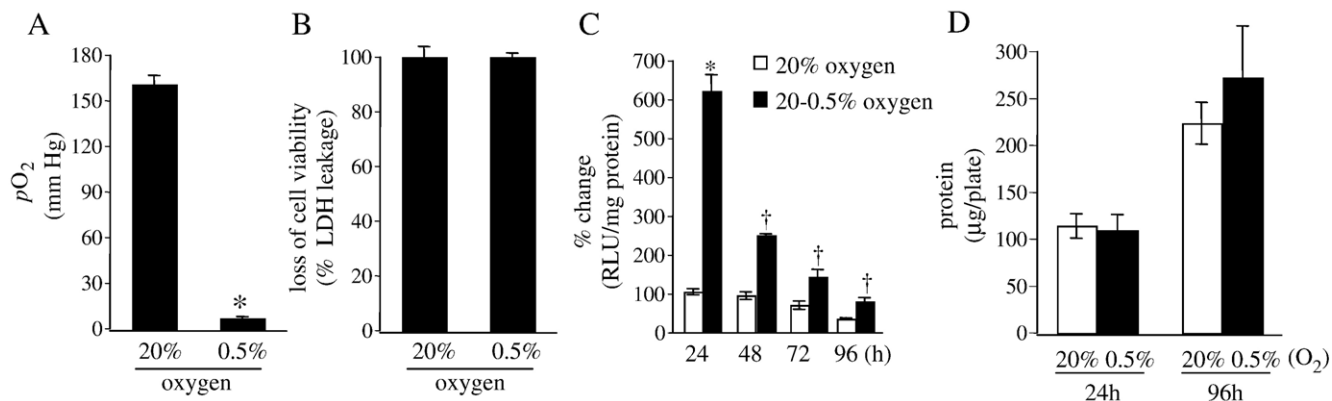


Fig. 2. Culture media pO<sub>2</sub> and HIF activity in response to changes in ambient O<sub>2</sub>. Plates containing cells in culture were moved from 20% O<sub>2</sub> ambience to 0.5% O<sub>2</sub> ambience. Dissolved O<sub>2</sub> concentration in the culture media was determined after 24 h of maintenance in 20 or 0.5% as indicated (A). (B) The hypoxic exposure did not influence cell viability. (C and D) Cells maintained in 20% O<sub>2</sub> ambience were plated and moved to 0.5% O<sub>2</sub> ambience where they were cultured for the specified duration. HIF activity subsided over time (C) while total protein content (D) in the cells was not affected. \**P* < 0.05; lower (A) or higher (C) compared to the paired control group maintained in 20% O<sub>2</sub>. †*P* < 0.05; lower compared to the HIF activity in the 0.5% group of the immediately previous time point. Results are mean  $\pm$  SD.

## Results and discussion

Cells in culture are typically maintained at 20% O<sub>2</sub>, i.e., room air containing 5% CO<sub>2</sub>. Such ambient pO<sub>2</sub> is, in most cases, much higher than the pO<sub>2</sub> of the organ represented by the cell. For example, the pO<sub>2</sub> of the heart is 35 mm Hg or roughly 5% O<sub>2</sub> [3]. We have recently demonstrated that cells isolated from the heart and cultured under conditions of fourfold excess ambient O<sub>2</sub>, i.e., 20% O<sub>2</sub> in room air, demonstrate striking functional changes that may be prevented substantially if cells were grown under isopO<sub>2</sub> conditions [3,4]. Such O<sub>2</sub>-sensitive changes are typically not observed in cell lines grown at 20% O<sub>2</sub> because the surviving and propagating cells in the line are those that have adjusted their normoxic set point to match the room air conditions. We have observed that the pO<sub>2</sub> of the mouse brain cortex is approximately 35 mm Hg or roughly 5% O<sub>2</sub> (Fig. 6B). This finding is consistent with previous estimates reported using the electron paramagnetic resonance spectroscopic approach [13]. The study of HT22 murine brain neurons demonstrate, however, that exposure to 5% O<sub>2</sub> ambience is biologically read as hypoxia as evident by HRE-driven luciferase expression (Fig. 1). Exposure of the same cells to 0.5% O<sub>2</sub> ambience further induced HIF activity (Fig. 1A). Of note, if the cells were

maintained in 5% O<sub>2</sub> on a long-term basis, they no longer responded to that pO<sub>2</sub> as detected by HIF activity. When these cells, adjusted to grow in 5% O<sub>2</sub>, were exposed to 0.5% O<sub>2</sub> ambience the resulting induction of HIF activity was less severe than that observed in cells adjusted to grow under 20% O<sub>2</sub> room air conditions (Fig. 1A). Results from the reporter assay were consistent with Western blot detecting stabilized HIF1 $\alpha$  (Fig. 1B). These observations indicate that the biological response to any given pO<sub>2</sub> is not tightly dependent on the physical pO<sub>2</sub> itself but on the conditioning of the cells. There are HIF1 $\alpha$ -independent mechanisms to upregulate HRE-luciferase activity [14]. Thus, we sought to characterize whether HIF1 $\alpha$  was indeed responsible for the HRE-luciferase activity detected in our experimental system.

A major advance in our comprehension of how hypoxia is sensed by mammalian cells came forth with the discovery of a family of oxygen-dependent enzymes responsible for the modulation of HIF1 stability [15–17]. Degradation of HIF1 $\alpha$  under normoxic conditions is triggered by posttranslational O<sub>2</sub>-dependent enzymatic hydroxylations at specific prolyl and asparaginyl residues within a polypeptide segment known as the oxygen-dependent degradation domain [18]. HIF prolyl hydroxylation is performed by a closely related set of isoenzymes (PHD1–3). Hydroxylation of either human HIF1 $\alpha$  Pro402 or

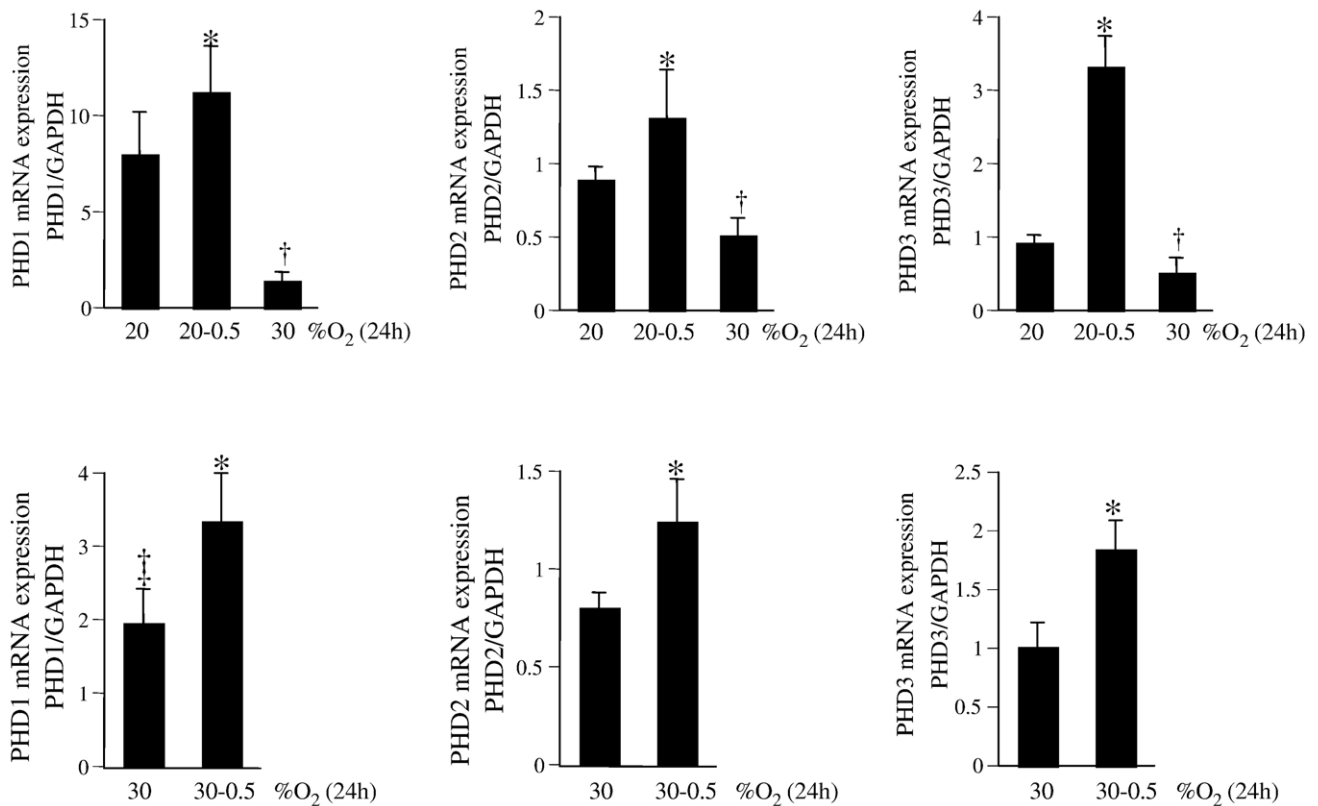


Fig. 4. Expression of prolyl hydroxylase (PHD) 1–3 in response to changes in O<sub>2</sub> ambience. Cells were maintained in 20% (upper row) or 30% (lower row) O<sub>2</sub> ambience for 4 weeks. For experiments, cells were plated and maintained in the corresponding O<sub>2</sub> ambience for 24 h. After that period, cells were moved to either a lower (0.5%) or higher (30%) O<sub>2</sub> ambience as indicated. PHD mRNA levels were quantitated by real-time PCR. \* or †  $P < 0.05$  compared to the corresponding bar on the extreme left of each panel. ‡ Lower compared to PHD1 expression in cells adjusted to growing in 20% O<sub>2</sub> ambience (i.e., bar vertically above). Results are mean  $\pm$  SD.



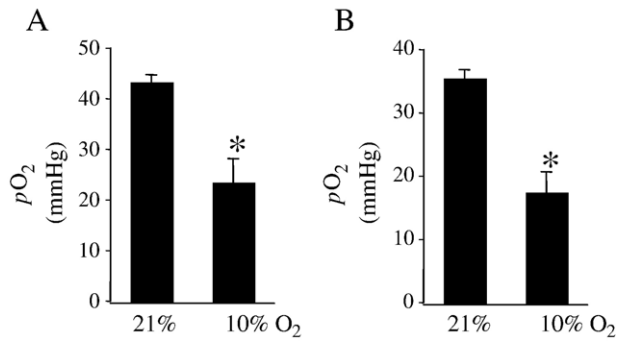


Fig. 5. Blood (A) and brain (B)  $pO_2$  of mice in response to changes in  $O_2$  ambience. \* $P < 0.05$ . Results are mean  $\pm$  SD.

Pro564 promotes interaction with the von Hippel-Lindau tumor suppressor protein (pVHL). In oxygenated cells, this process targets HIF $\alpha$  for rapid proteasomal destruction [9]. In our effort to determine the significance of HIF in hypoxia-induced HRE reporting observed in Fig. 1A, we overexpressed PHD1 in the cells (Fig. 1C). Hypoxia-induced HRE-luciferase reporting was significantly blunted in PHD1 overexpressing cells (Fig. 1D), indicating that HIF is responsible for the observed hypoxia-induced HRE-luciferase activity as evident in Fig. 1A. To confirm the specific role of HIF1 $\alpha$  in our experimental system, siRNA-based HIF1 $\alpha$  knockdown was performed. Delivery of HIF1 $\alpha$  siRNA to cells significantly lowered HIF1 $\alpha$  gene expression (Fig. 1E). In such HIF1 $\alpha$  knockdown cells, the ability of 0.5%  $O_2$  ambience failed to induce HRE-luciferase activity (Fig. 1F). Taken together, the results indicated that in our experimental system HIF1 $\alpha$  was implicated in enhancing HRE-luciferase activity in response to exposure to hypoxic ambience.

We tested the hypothesis that the normoxic set point in biological cells is floating and adjustable. To test this hypothesis experiments were conducted where HT22 neurons, stably transfected with the HRE-luciferase construct, were exposed to varying  $O_2$  ambience. Exposure of the culture dishes to

different  $O_2$  ambience clearly influenced the dissolved  $O_2$  concentration in the culture media (Fig. 2A). Compared to cells grown under standard room air conditions, the culture media of cells grown in 0.5%  $O_2$  ambience contained over 10-fold lower  $pO_2$  (Fig. 2A). Exposure to 0.5%  $O_2$  ambience did not influence cell viability (Fig. 2B). When cells adjusted to growing under room air conditions was moved to 0.5%  $O_2$  ambience, potent HIF activity was recorded (Fig. 2C). Continuous exposure of the cells to the same  $O_2$  ambience clearly, over time, blunted the biological response reflecting cellular adjustment which may be viewed as a lowering of the normoxic set point (Fig. 2B). This observation is consistent with our finding reported in Fig. 1 demonstrating that cells maintained for 4 weeks in 5%  $O_2$  ambience do not report HIF activity. While HRE-driven luciferase activity decreased as a function of time (Fig. 2C), total protein content in the cells maintained at 0.5%  $O_2$  ambience did not decline (Fig. 2D).

To further test the hypothesis that the normoxic set point in biological cells is adjustable we tried another line of investigation testing whether the cells could be made to biologically report hypoxia by adjusting them to an  $O_2$  ambience above 20%. Exposure of the cells to 50%  $O_2$  resulted in overt growth arrest and some toxicity (not shown). Based on pilot studies, we identified that at 30%  $O_2$  ambience HT22 cells grew well and free of  $O_2$  toxicity (Fig. 3C). We sought to adjust the putative normoxic set point upward by maintaining a colony of cells in 30%  $O_2$  ambience. Passage-matched cells were maintained under standard 20%  $O_2$  culture conditions. Acute exposure of cells maintained in 30%  $O_2$  to 20%  $O_2$  ambience resulted in increased HIF activity (Fig. 3A). The observation that exposure to room air ambience was biologically read by the cells as a hypoxic exposure suggests that maintenance of cells in 30%  $O_2$  was effective in resetting the normoxic set point upward. This finding was also consistent with our observation that the exposure of 30%  $O_2$  was not toxic to the cells (Fig. 3B).

In the presence of sufficient  $pO_2$ , HIF1 $\alpha$  is destabilized by posttranslational hydroxylation of Pro-564 and Pro-402 by a

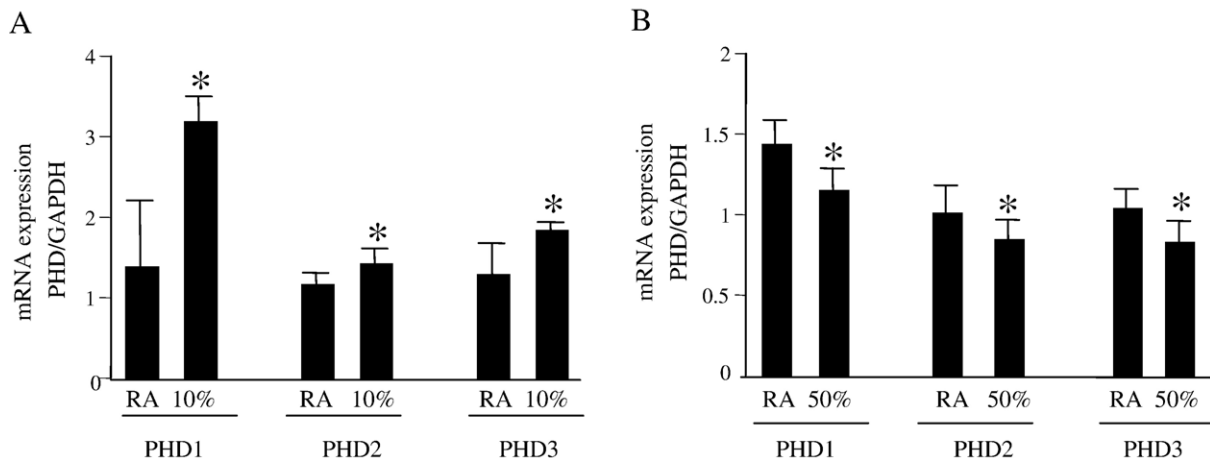


Fig. 6. Prolyl hydroxylase (PHD) gene expression in the brain of mice maintained in room air, hypoxic or hyperoxic ambience. Total RNA was collected from the cortical region of mice brain after 24 h in either room air, 10%  $O_2$  (A), or 50%  $O_2$  (B) ambience. PHD1–3 expression was quantitated using real-time PCR. \* $P < 0.05$ ; higher (A) or lower (B) compared to the corresponding group maintained in room air. Results are mean  $\pm$  SD.

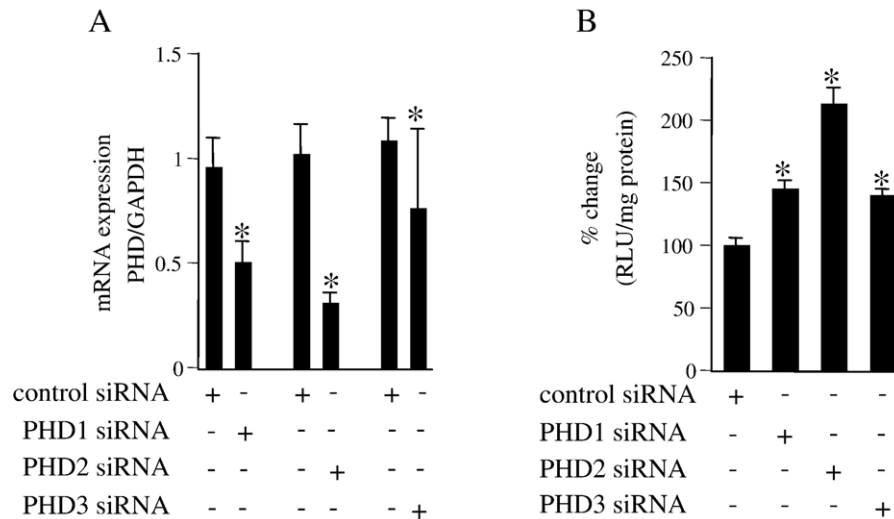


Fig. 7. Knockdown of prolyl hydroxylase (PHD) 1–3 expression elevates HIF activity. Cells maintained in 20% O<sub>2</sub> ambience were plated in antibiotic-free culture media for 24 h before transfection. Cells were transfected with 100 nM per sample with control siRNA (nontargeting siRNA pool) or PHD1/PHD2/PHD3 siRNA targeting siRNA pool as indicated. Cells were maintained for 48 h after transfection before being harvested for mRNA quantitation (A) or determination of HRE-luciferase activity (B). PHD (1–3) mRNA levels were quantitated by real-time PCR. \**P* < 0.05; lower (A) or higher (B) compared to the corresponding group treated with control siRNA. Results are mean ± SD.

family of oxygen-sensitive dioxygenases catalyzing prolyl hydroxylation, a specific modification that provides recognition for the E3 ubiquitin ligase complex containing the von Hippel-Lindau tumor suppressor protein. Three HIF prolyl hydroxylases (PHD1, 2, and 3) were identified recently in mammals and shown to hydroxylate HIF $\alpha$  subunits. In HT22 cells maintained under standard room air (20% O<sub>2</sub>) conditions, acute changes in O<sub>2</sub> ambience significantly influenced the expression of PHD1–3. Exposure of such cells to lower *p*O<sub>2</sub> increased PHD expression while exposure to higher *p*O<sub>2</sub> decreased expression of PHD1–3 (Fig. 4, upper row). In cells adjusted to growing in 30% O<sub>2</sub> ambience, we had noted an upward shift in the normoxic set point (Fig. 3). Studies of PHD1–3 mRNA expression revealed that compared to cells grown in 20% O<sub>2</sub>, cells maintained in 30% O<sub>2</sub> ambience had significantly lower PHD1 expression (Fig. 4). In these cells, grown in 30% O<sub>2</sub> ambience, acute exposure to 0.5% significantly increased the expression of PHD1–3 (Fig. 4). Next, we sought to examine whether this O<sub>2</sub>-sensitive expression of PHD1–3 is effective in vivo. Mice were maintained in an environmental chamber containing either standard room air or 10% O<sub>2</sub>. Exposure to the 10% O<sub>2</sub> environment decreased both peripheral blood as well as brain *p*O<sub>2</sub> (Fig. 5). Under physiological conditions while tissue hypoxia is typically associated with ischemic disorders, reoxygenation may cause hyperoxic insult [3,4,19]. Consistent with the findings with HT22 cells hypoxia and hyperoxia in vivo significantly increased and decreased the expression of PHD1–3, respectively (Fig. 6). To test the significance of PHD expression with respect to HIF transactivation, we employed the siRNA approach to specifically knockdown PHD1, 2, or 3. Knockdown of PHD resulted in HRE-luciferase reporting even under conditions of room air (Fig. 7). These observations indicate that changes in PHD expression may be effective in resetting the normoxic set point of cells. Thus, PHD-targeted

approaches may be effective in inducing or silencing HIF-dependent gene expression under a given condition of *p*O<sub>2</sub>.

The current study provides the first evidence demonstrating that PHD expression is down-regulated at higher *p*O<sub>2</sub>. Thus, levels of PHD expression are subject to dual regulation by ambient *p*O<sub>2</sub>. Using a small interference RNA approach it has been recently demonstrated that each of the three PHD isoforms contributes in a nonredundant manner to the regulation of both HIF1 $\alpha$  and HIF2 $\alpha$  subunits. Of importance, it has been reported that the contribution of each PHD under particular culture conditions is strongly dependent on the abundance of the enzyme [20]. Taken together, this work presents first direct evidence supporting that the normoxic set point in cells is adjustable and that O<sub>2</sub>-sensitive PHD expression may be implicated in fine tuning that set point.

### Acknowledgments

This work was supported by NIH Grants NS42617, HL73087, and GM69589 to C.K.S.

### References

- [1] Semenza, G. L. HIF-1, O(2), and the 3 PHDs: how animal cells signal hypoxia to the nucleus. *Cell* **107**:1–3; 2001.
- [2] Porwol, T.; Ehleben, W.; Brand, V.; Acker, H. Tissue oxygen sensor function of NADPH oxidase isoforms, an unusual cytochrome aa3 and reactive oxygen species. *Respir. Physiol.* **128**:331–348; 2001.
- [3] Roy, S.; Khanna, S.; Bickerstaff, A. A.; Subramanian, S. V.; Atalay, M.; Bierl, M.; Pendyala, S.; Levy, D.; Sharma, N.; Venojarvi, M.; Strauch, A.; Orosz, C. G.; Sen, C. K. Oxygen sensing by primary cardiac fibroblasts: a key role of p21(Waf1/Cip1/Sdi1). *Circ. Res.* **92**:264–271; 2003.
- [4] Roy, S.; Khanna, S.; Wallace, W. A.; Lappalainen, J.; Rink, C.; Cardounel, A. J.; Zweier, J. L.; Sen, C. K. Characterization of perceived hyperoxia in isolated primary cardiac fibroblasts and in the reoxygenated heart. *J. Biol. Chem.* **278**:47129–47135; 2003.

- [5] Covelto, K. L.; Simon, M. C. HIFs, hypoxia, and vascular development. *Curr. Top. Dev. Biol.* **62**:37–54; 2004.
- [6] Michiels, C. Physiological and pathological responses to hypoxia. *Am. J. Pathol.* **164**:1875–1882; 2004.
- [7] Manalo, D. J.; Rowan, A.; Lavoie, T.; Natarajan, L.; Kelly, B. D.; Ye, S. Q.; Garcia, J. G.; Semenza, G. L. Transcriptional regulation of vascular endothelial cell responses to hypoxia by HIF-1. *Blood* **105**: 659–669; 2005.
- [8] Semenza, G. L. Hydroxylation of HIF-1: oxygen sensing at the molecular level. *Physiology (Bethesda)* **19**:176–182; 2004.
- [9] Metzen, E.; Ratcliffe, P. J. HIF hydroxylation and cellular oxygen sensing. *Biol. Chem.* **385**:223–230; 2004.
- [10] Aminova, L. R.; Chavez, J. C.; Lee, J.; Ryu, H.; Kung, A.; Lamanna, J. C.; Ratan, R. R. Prosurvival and prodeath effects of hypoxia-inducible factor-1 $\alpha$  stabilization in a murine hippocampal cell line. *J. Biol. Chem.* **280**:3996–4003; 2005.
- [11] Semenza, G. L.; Jiang, B. H.; Leung, S. W.; Passantino, R.; Concordet, J. P.; Maire, P.; Giullongo, A. Hypoxia response elements in the aldolase A, enolase 1, and lactate dehydrogenase A gene promoters contain essential binding sites for hypoxia-inducible factor 1. *J. Biol. Chem.* **271**: 32529–32537; 1996.
- [12] Khanna, S.; Roy, S.; Ryu, H.; Bahadduri, P.; Swaan, P. W.; Ratan, R. R.; Sen, C. K. Molecular basis of vitamin E action. Tocotrienol modulates 12-lipoxygenase, a key mediator of glutamate-induced neurodegeneration. *J. Biol. Chem.* **278**:43508–43515; 2003.
- [13] O'Hara, J. A.; Khan, N.; Hou, H.; Wilmo, C. M.; Demidenko, E.; Dunn, J. F.; Swartz, H. M. Comparison of EPR oximetry and Eppendorf polarographic electrode assessments of rat brain PtO<sub>2</sub>. *Physiol. Meas.* **25**:1413–1423; 2004.
- [14] Zaman, K.; Ryu, H.; Hall, D.; O'Donovan, K.; Lin, K. I.; Miller, M. P.; Marquis, J. C.; Baraban, J. M.; Semenza, G. L.; Ratan, R. R. Protection from oxidative stress-induced apoptosis in cortical neuronal cultures by iron chelators is associated with enhanced DNA binding of hypoxia-inducible factor-1 and ATF-1/CREB and increased expression of glycolytic enzymes, p21(waf1/cip1), and erythropoietin. *J. Neurosci.* **19**:9821–9830; 1999.
- [15] Bruick, R. K.; McKnight, S. L. A conserved family of prolyl-4-hydroxylases that modify HIF. *Science* **294**:1337–1340; 2001.
- [16] Epstein, A. C.; Gleadle, J. M.; McNeill, L. A.; Hewitson, K. S.; O'Rourke, J.; Mole, D. R.; Mukherji, M.; Metzen, E.; Wilson, M. I.; Dhanda, A.; Tian, Y. M.; Masson, N.; Hamilton, D. L.; Jaakkola, P.; Barstead, R.; Hodgkin, J.; Maxwell, P. H.; Pugh, C. W.; Schofield, C. J.; Ratcliffe, P. J. *C. elegans* EGL-9 and mammalian homologs define a family of dioxygenases that regulate HIF by prolyl hydroxylation. *Cell* **107**:43–54; 2001.
- [17] Jaakkola, P. Targeting of HIF- $\alpha$  to the von Hippel-Lindau ubiquitylation complex by O<sub>2</sub>-regulated prolyl hydroxylation. *Science* **292**:468–472; 2001.
- [18] Semenza, G. L. HIF-1 and tumor progression: pathophysiology and therapeutics. *Trends Mol. Med.* **8**:S62–S67; 2002.
- [19] Roy, S.; Khanna, S.; Sen, C. K. Perceived hyperoxia: oxygen-regulated signal transduction pathways in the heart. *Methods Enzymol.* **381**:133–139; 2004.
- [20] Appelhoff, R. J.; Tian, Y. M.; Raval, R. R.; Turley, H.; Harris, A. L.; Pugh, C. W.; Ratcliffe, P. J.; Gleadle, J. M. Differential function of the prolyl hydroxylases PHD1, PHD2, and PHD3 in the regulation of hypoxia-inducible factor. *J. Biol. Chem.* **279**:38458–38465; 2004.